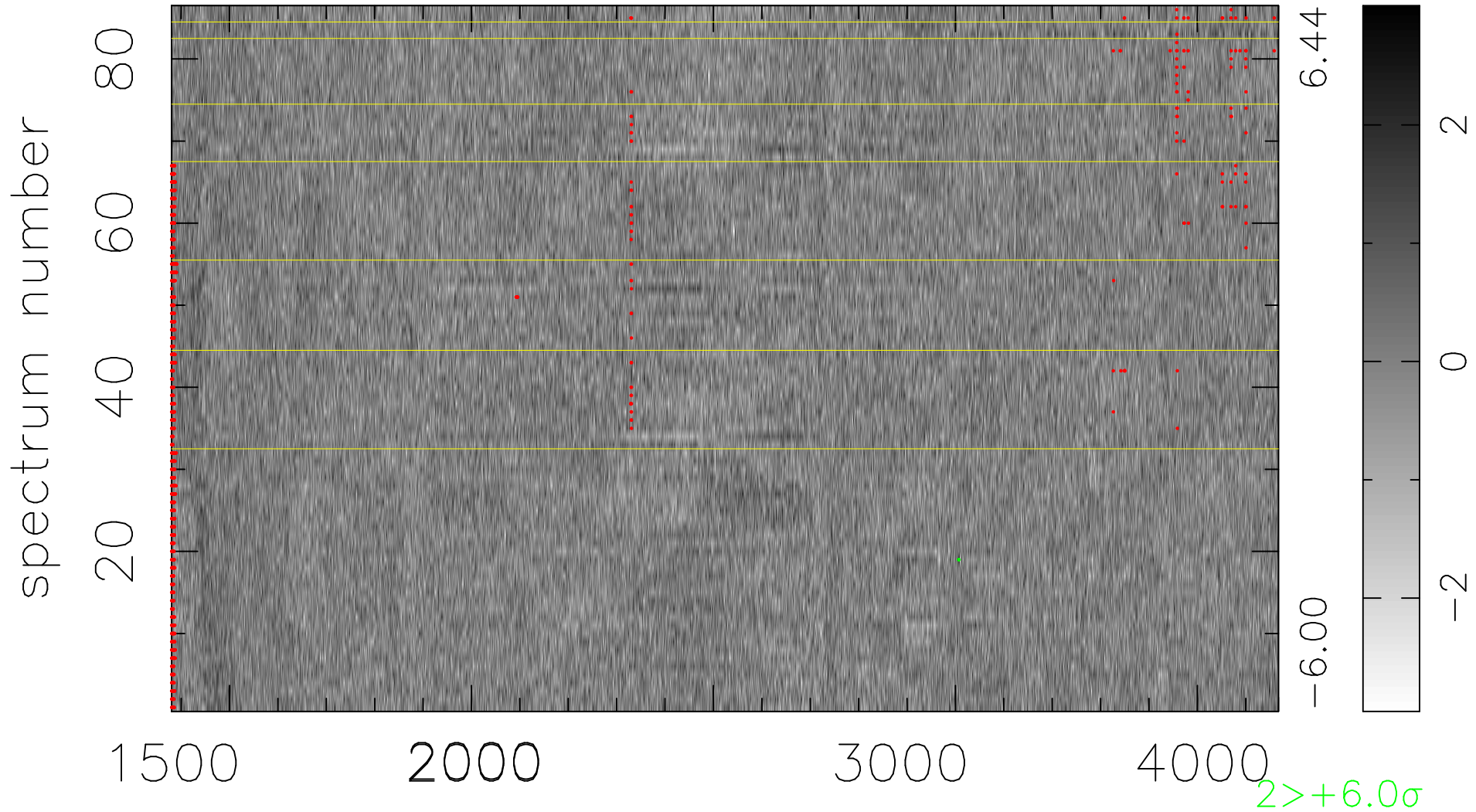


$$\chi(\lambda, t) = ( \text{Data} - \text{Model } \text{AC}_5\text{B}_4\text{F} ) / \sigma \chi$$

$$\chi^2 / (393450 - 5184) = 0.877 \Rightarrow 1.009$$

4575x86



bad:983=0.25%     $\lambda$  (Å)     $z = 1.40166$