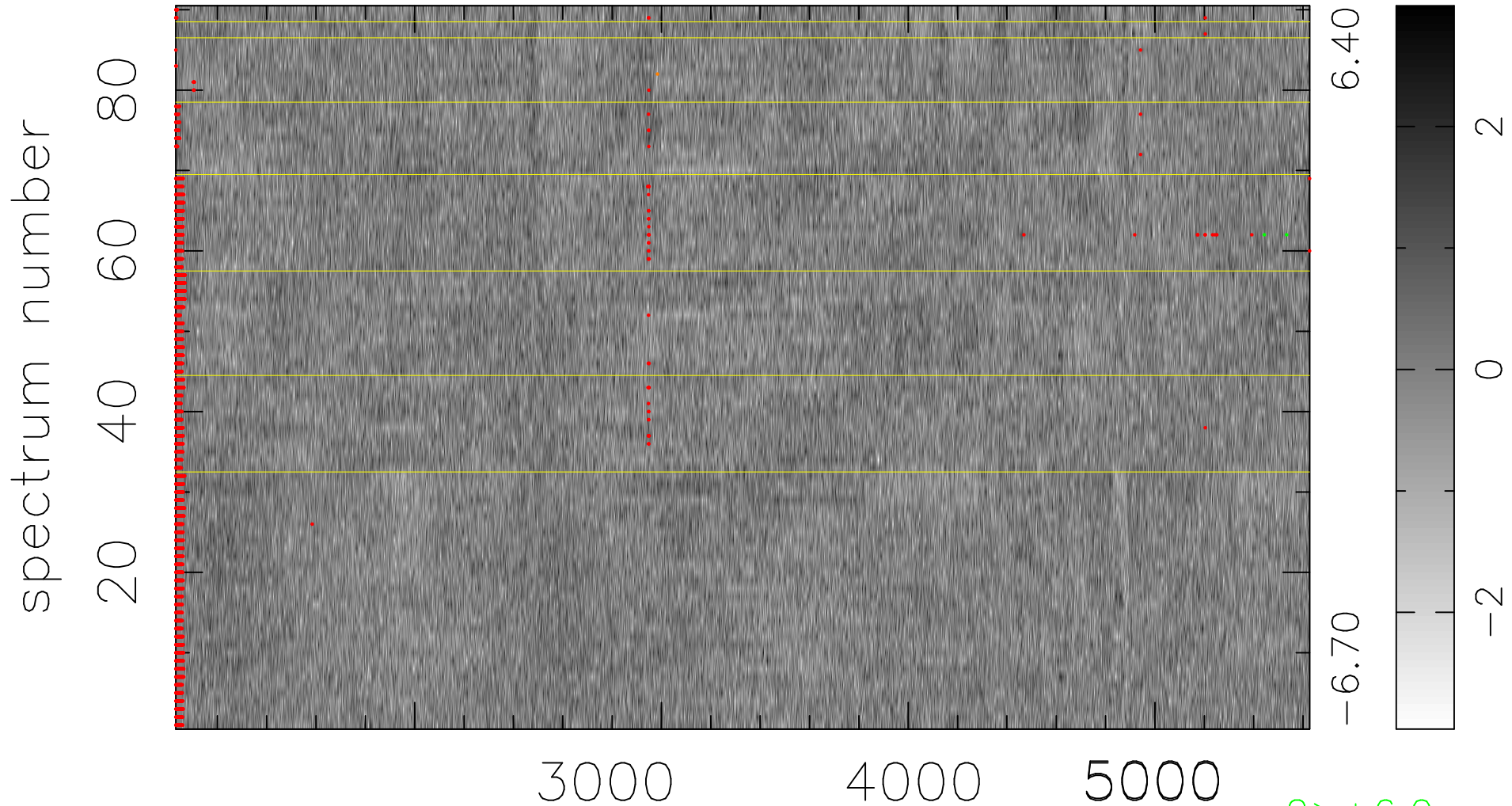


$$\chi(\lambda, t) = (\text{Data} - \text{Model } \text{AC}_5\text{B}_3\text{F}) / \sigma \chi$$

$$\chi^2 / (413640 - 5098) = 0.933 \Rightarrow 1.008$$

4596x90



bad:2236=0.54% λ (Å) $z = 0.78536$

2 > +6.0 σ

1 < -6.0 σ