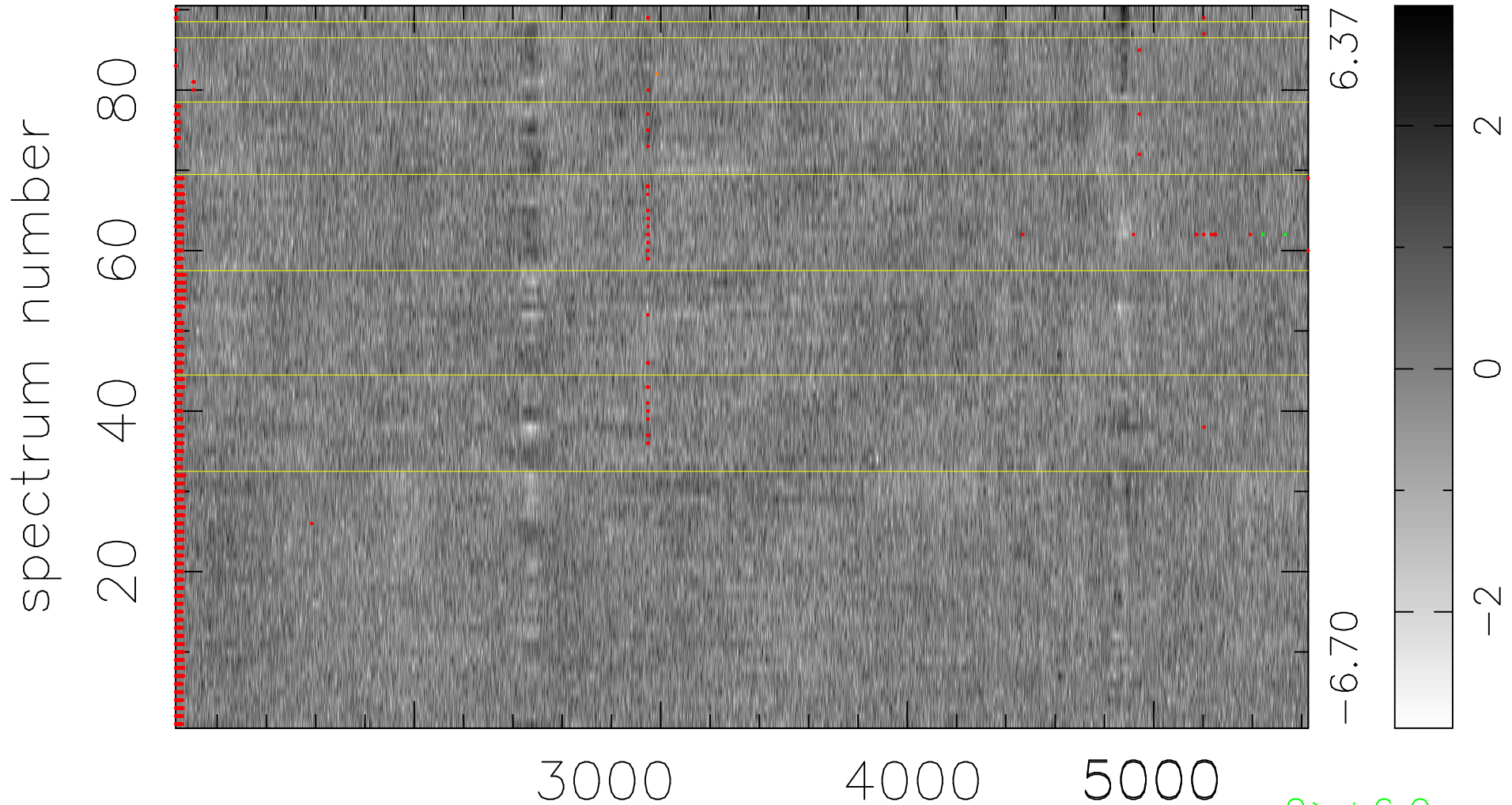


$$\chi(\lambda, t) = ( \text{Data} - \text{Model AC}_5\text{F} ) / \sigma \chi$$

$$\chi^2 / (413640 - 4973) = 0.942 \Rightarrow 1.006$$

4596x90



bad:2236=0.54%  $\lambda$  (Å)  $z = 0.78536$

2 > +6.0σ

1 < -6.0σ