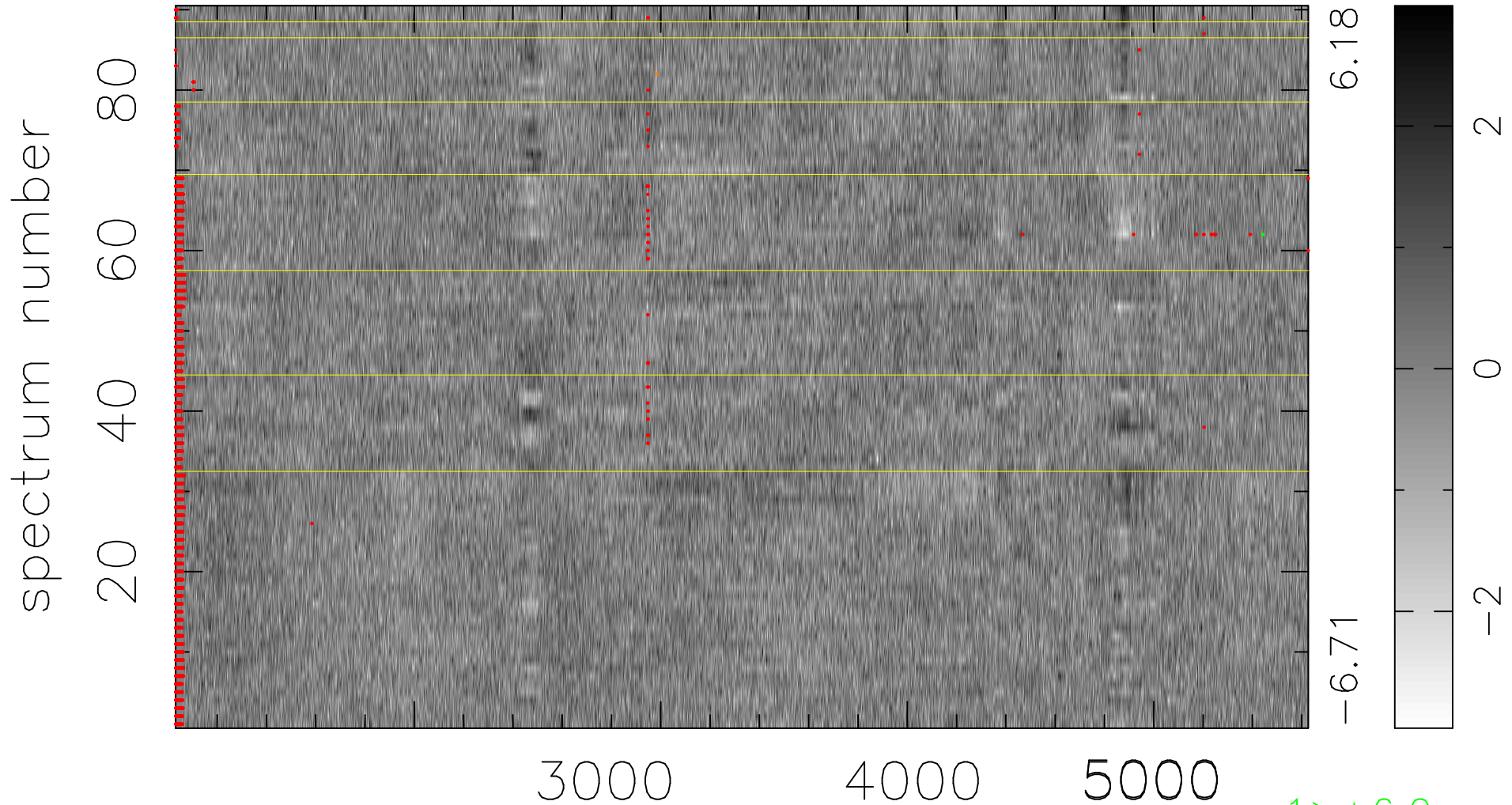


$$\chi(\lambda, t) = (\text{Data} - \text{Model } AC_5) / \sigma \chi$$

$$\chi^2 / (413640 - 4883) = 0.954 \Rightarrow 1.007$$

4596x90



bad:2236=0.54% λ (Å) $z = 0.78536$

1 > +6.0σ

1 < -6.0σ