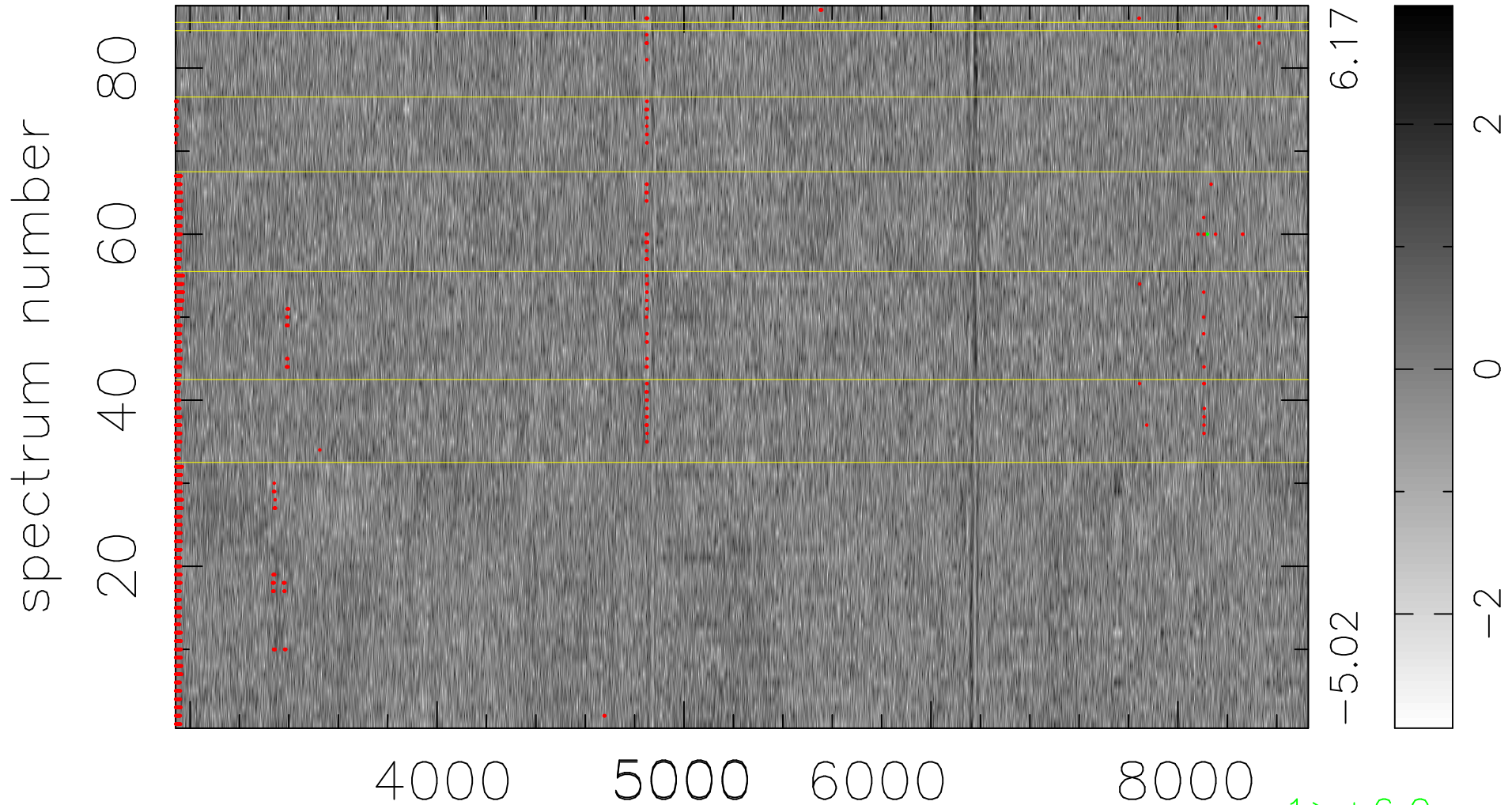


$$\chi(\lambda, t) = ( \text{Data} - \text{Model } \text{AC}_5\text{B}_4\text{F} ) / \sigma \chi$$

$$\chi^2 / (399069 - 5235) = 0.908 \Rightarrow 0.998$$

4587x87



bad:1707=0.43%  $\lambda$  (Å)  $z = 0.15227$