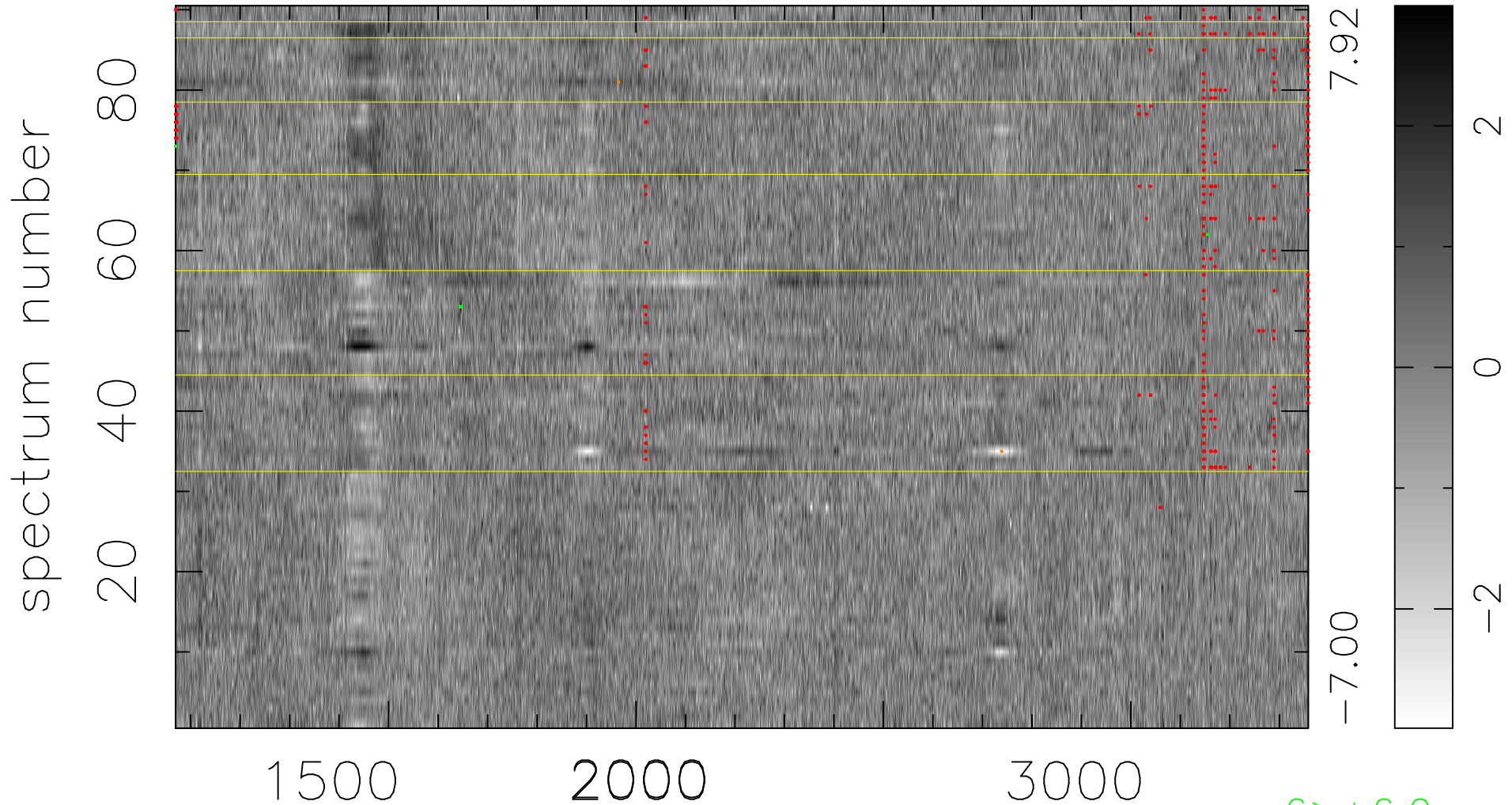


$$\chi(\lambda, t) = ( \text{Data} - \text{Model AC}_5\text{F} ) / \sigma \chi$$

$\chi^2 / (412110 - 5155) = 0.987 \Rightarrow 1.010$

4579x90



bad:412=0.10%

$\lambda$  (Å)  $z = 1.77073$

6 > +6.0σ

2 < -6.0σ