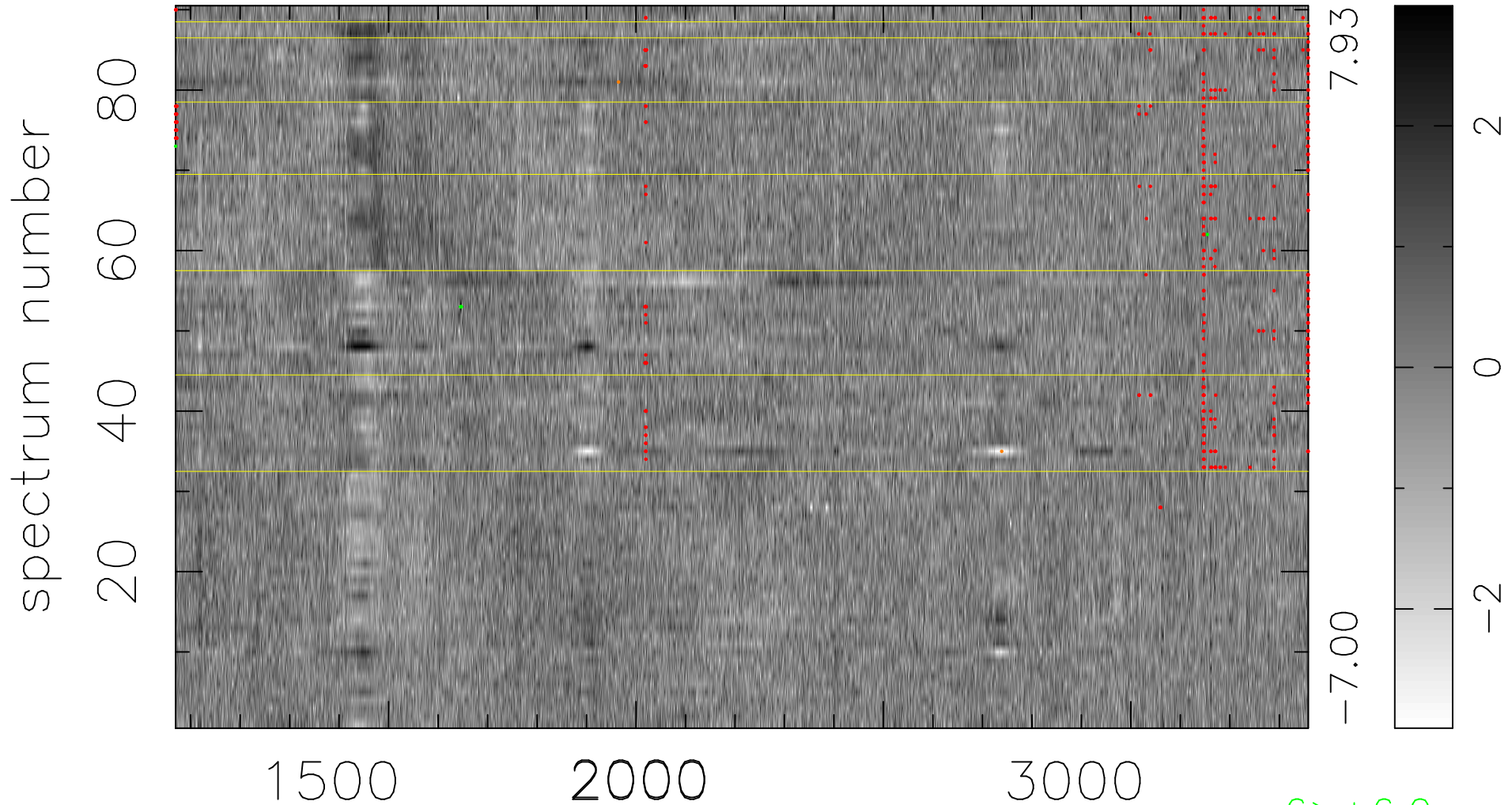


$$\chi(\lambda, t) = ( \text{Data} - \text{Model } AC_5 ) / \sigma \chi$$

$$\chi^2 / (412110 - 5065) = 0.992 \Rightarrow 1.009$$

4579x90



bad:412=0.10%

$\lambda$  (Å)  $z = 1.77073$

6 > +6.0σ

2 < -6.0σ