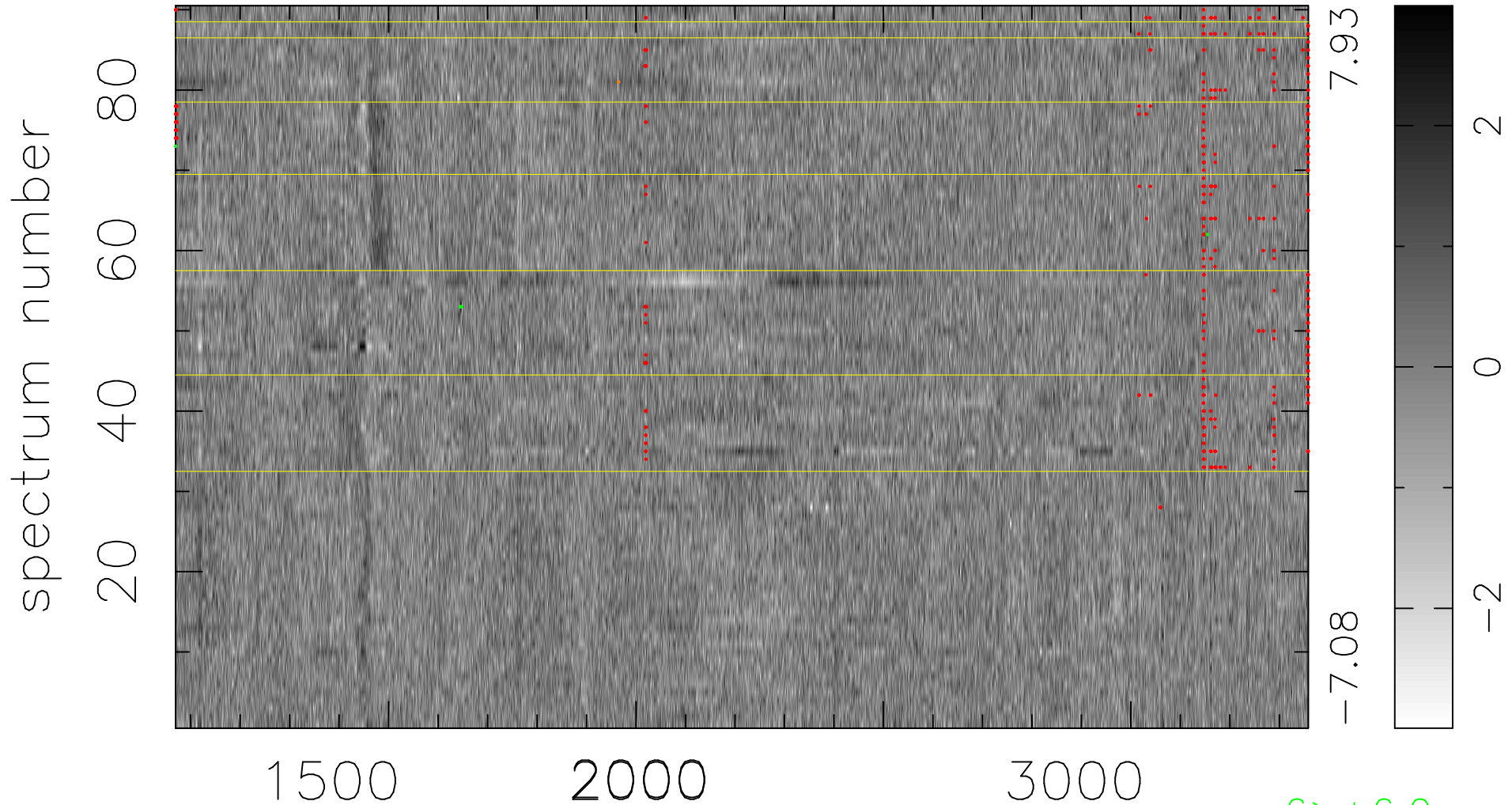


$$\chi(\lambda, t) = (\text{Data} - \text{Model } \text{AC}_5\text{B}_5\text{F}) / \sigma \chi$$

$$\chi^2 / (412110 - 5341) = 0.908 \Rightarrow 1.011$$

4579x90



bad:412=0.10%

λ (Å) $z = 1.77073$

6 > +6.0σ

1 < -6.0σ