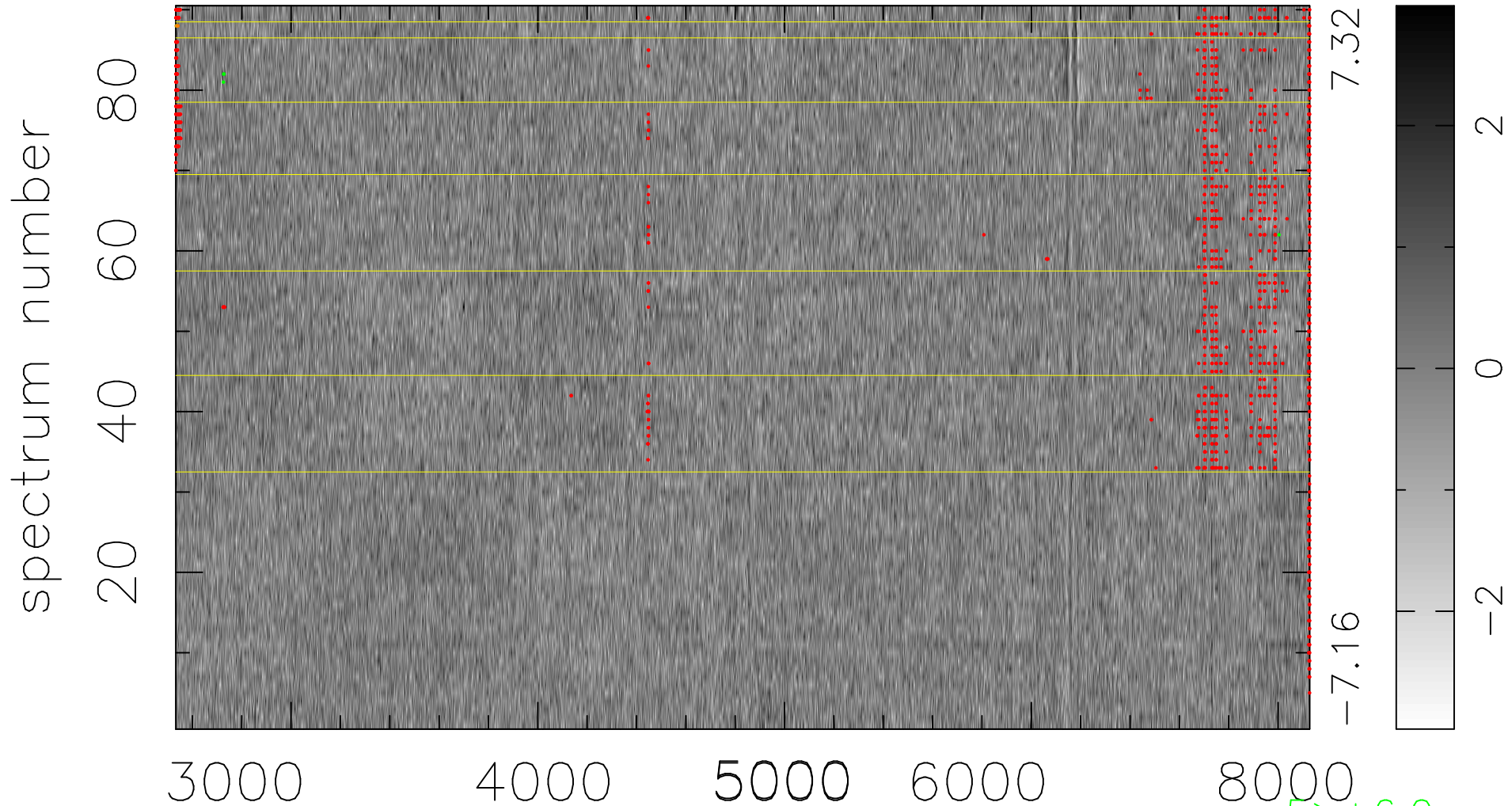


$$\chi(\lambda, t) = (\text{Data} - \text{Model } \text{AC}_5\text{B}_3\text{F}) / \sigma \chi$$

$$\chi^2 / (413640 - 5153) = 0.961 \Rightarrow 1.007$$

4596x90



bad:1202=0.29% λ (Å) $z = 0.26388$

5 > +6.0σ
3 < -6.0σ