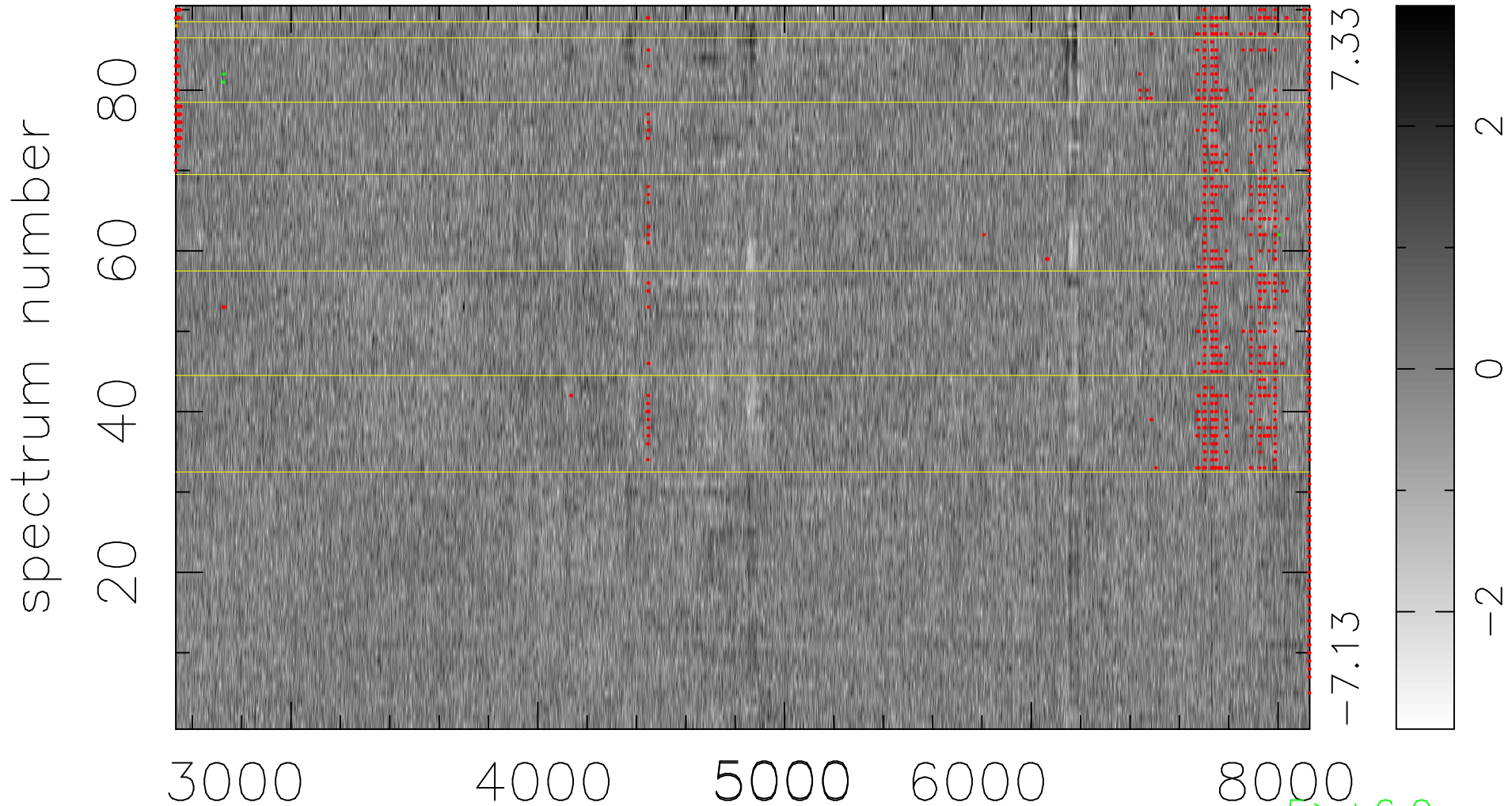


$$\chi(\lambda, t) = (\text{Data} - \text{Model AC}_5\text{F}) / \sigma \chi$$

$$\chi^2 / (413640 - 4986) = 0.972 \Rightarrow 1.006$$

4596 × 90



bad:1202=0.29% λ (Å) $z = 0.26388$

5 > +6.0σ

2 < -6.0σ