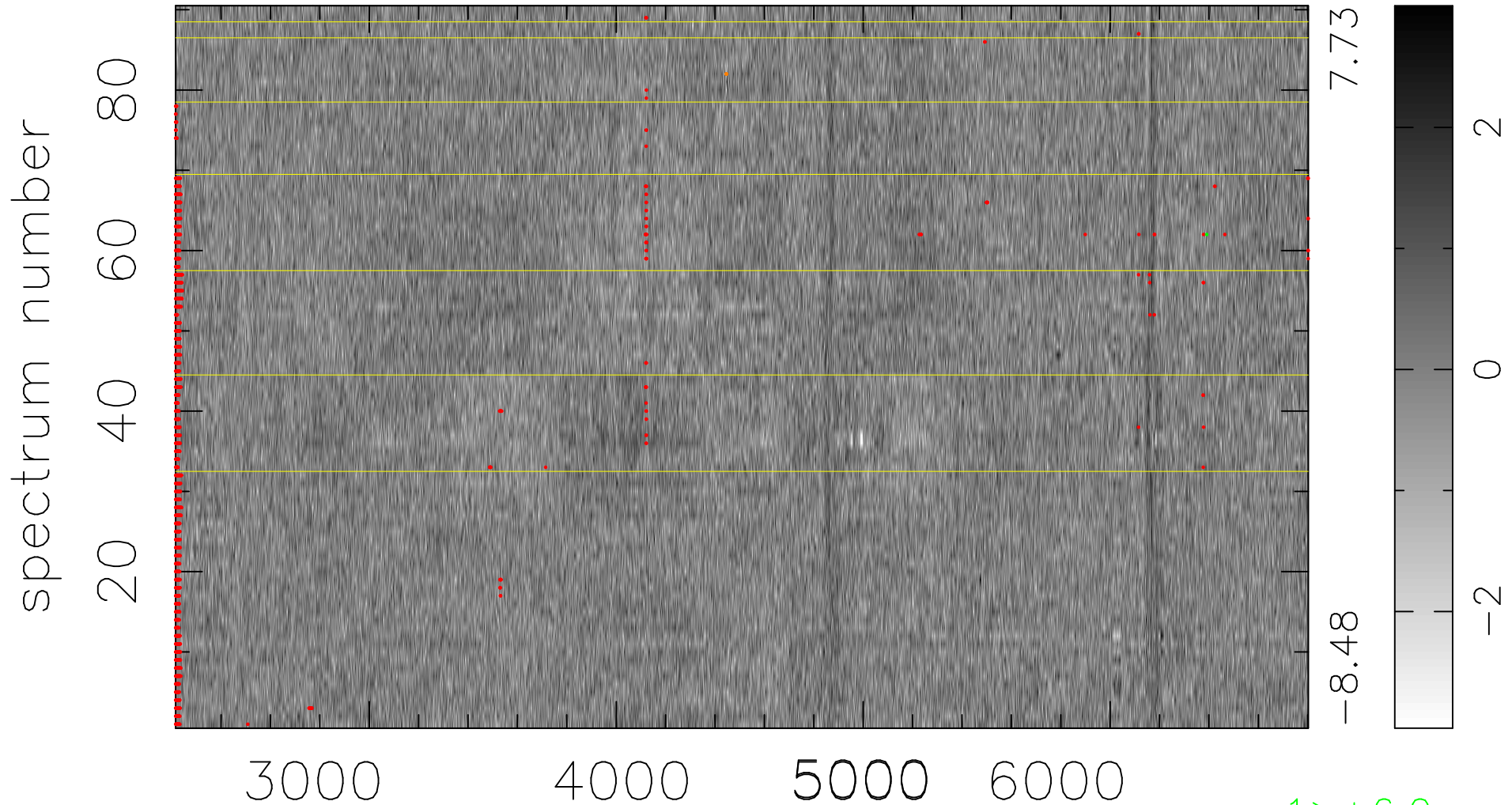


$$\chi(\lambda, t) = ( \text{Data} - \text{Model } \text{AC}_5\text{B}_4\text{F} ) / \sigma \chi$$

$$\chi^2 / (412830 - 5227) = 0.926 \Rightarrow 1.009$$

4587 × 90



bad:1452=0.35%     $\lambda$  (Å)     $z = 0.36268$

1 > +6.0σ

3 < -6.0σ