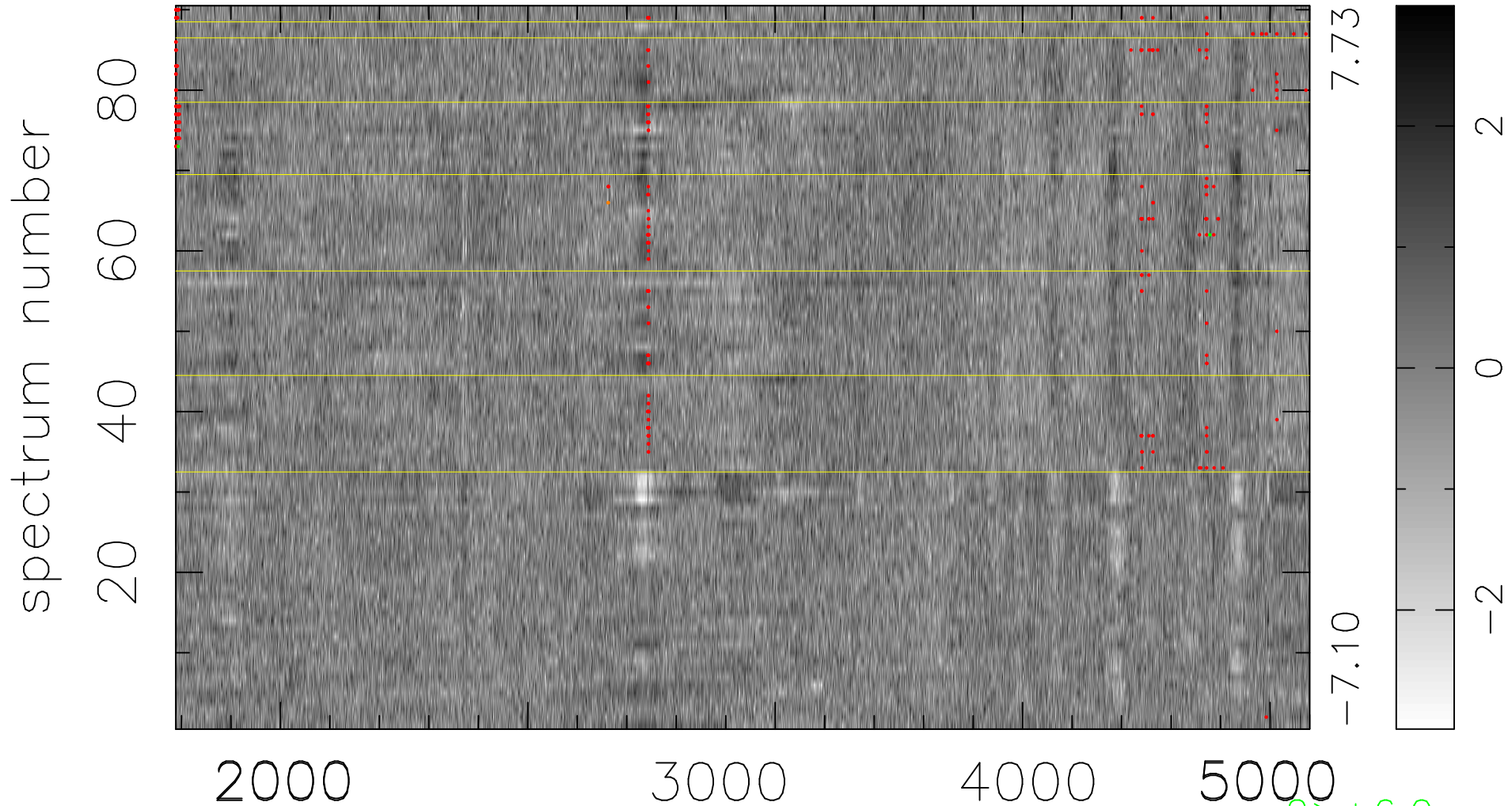


$$\chi(\lambda,t) = ( \text{Data} - \text{Model } AC_5 ) / \sigma \chi$$

$$\chi^2 / (412560 - 4974) = 0.961 \Rightarrow 1.009$$

4584x90



bad:338=0.082%  $\lambda$  (Å)  $z = 0.98509$

$2 > +6.0\sigma$

$2 < -6.0\sigma$