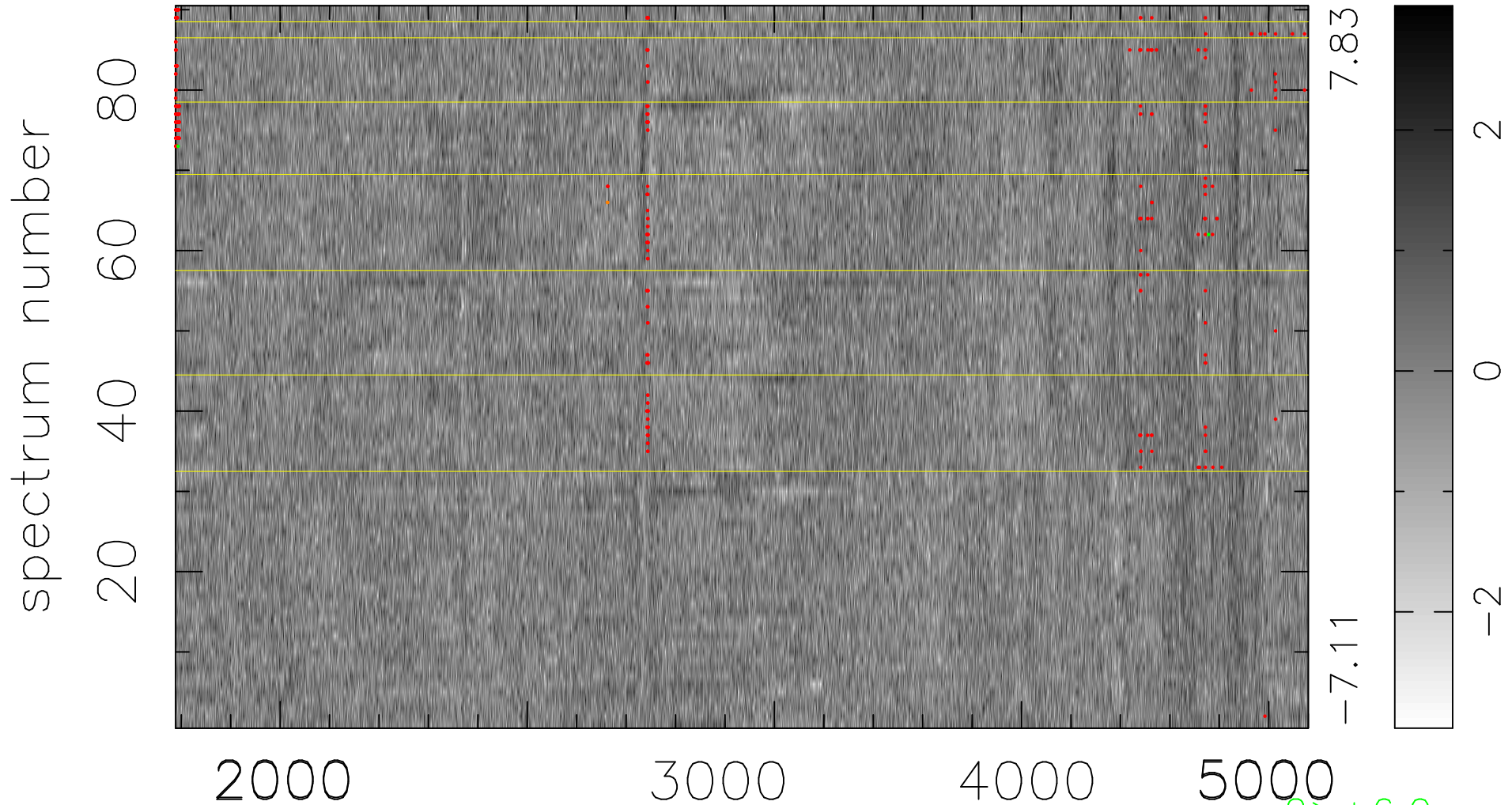


$$\chi(\lambda, t) = ( \text{Data} - \text{Model } \text{AC}_5\text{B}_4\text{F} ) / \sigma \chi$$

$$\chi^2 / (412560 - 5210) = 0.922 \Rightarrow 1.013$$

4584x90



bad:338=0.082%  $\lambda$  (Å)  $z = 0.98509$

$2 > +6.0\sigma$

$2 < -6.0\sigma$