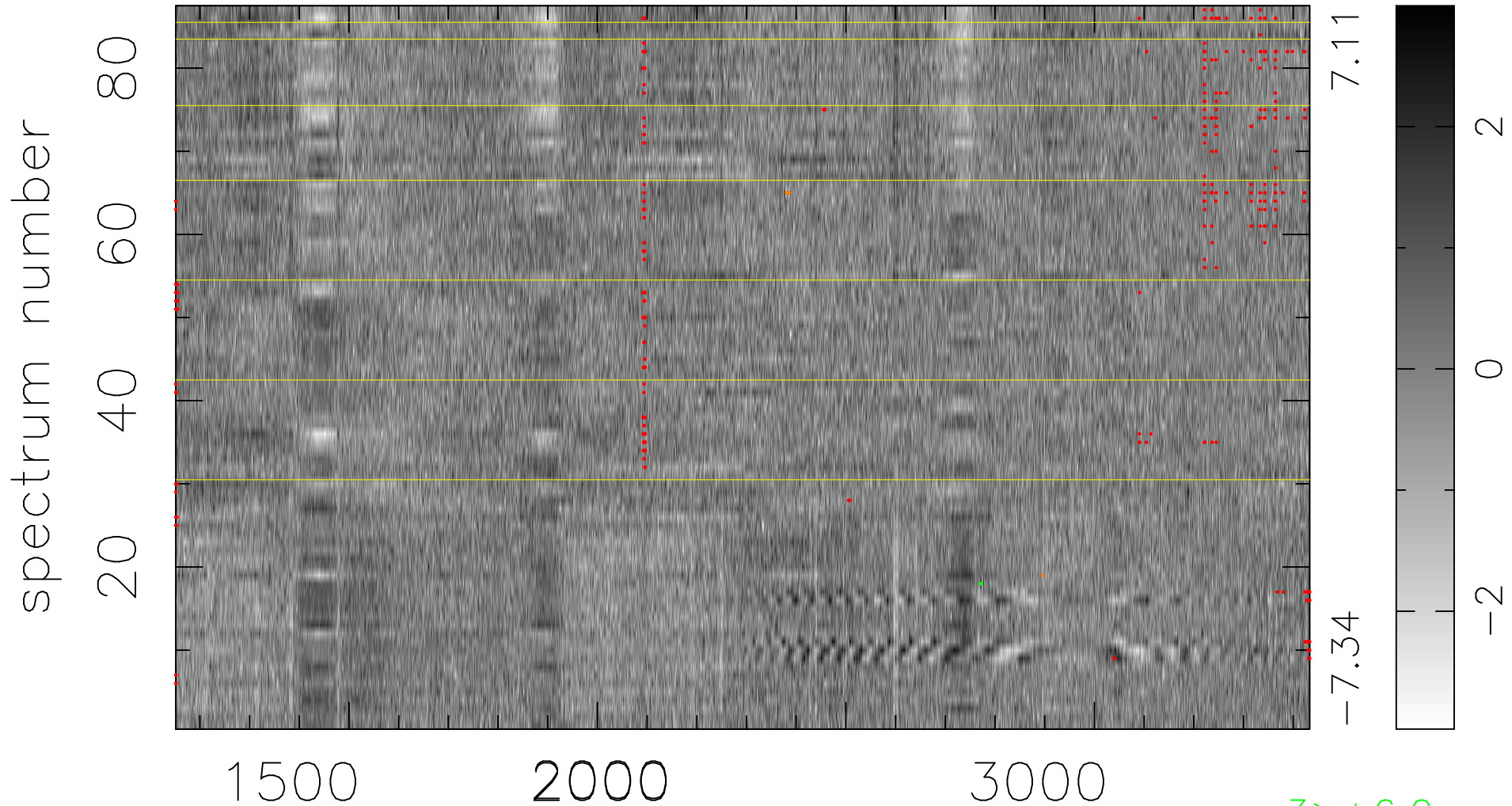


$$\chi(\lambda, t) = ( \text{Data} - \text{Model AC}_5\text{F} ) / \sigma \chi$$

$$\chi^2 / (397068 - 5119) = 1.079 \Rightarrow 1.008$$

4564x87



bad:402=0.10%

$\lambda$  (Å)  $z = 1.67723$

3 > +6.0 $\sigma$

5 < -6.0 $\sigma$