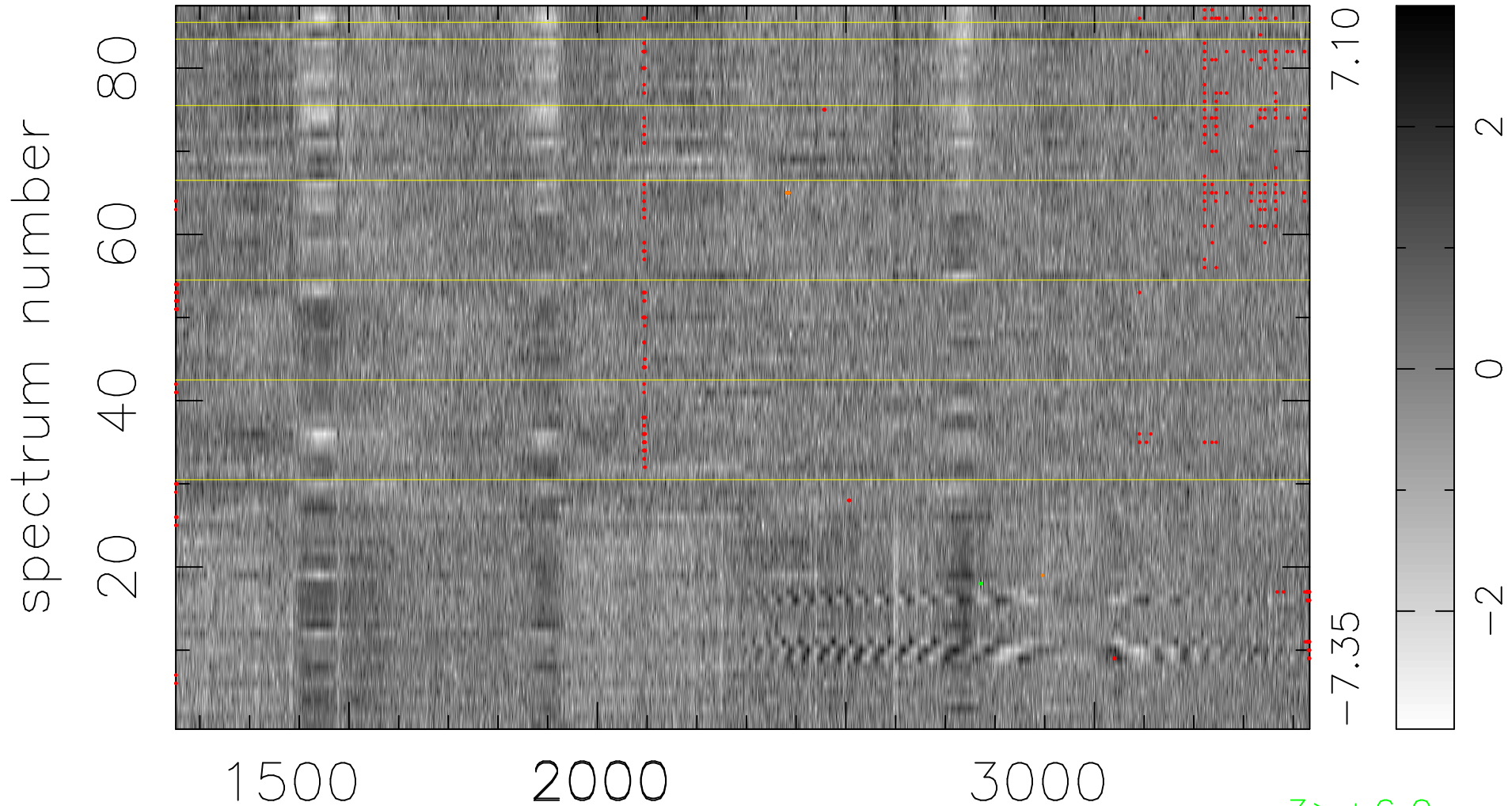


$$\chi(\lambda, t) = (\text{Data} - \text{Model } AC_5) / \sigma \chi$$

$$\chi^2 / (397068 - 5032) = 1.092 \Rightarrow 1.008$$

4564x87



bad:402=0.10%

λ (\AA) $z = 1.67723$

3 > +6.0 σ

5 < -6.0 σ