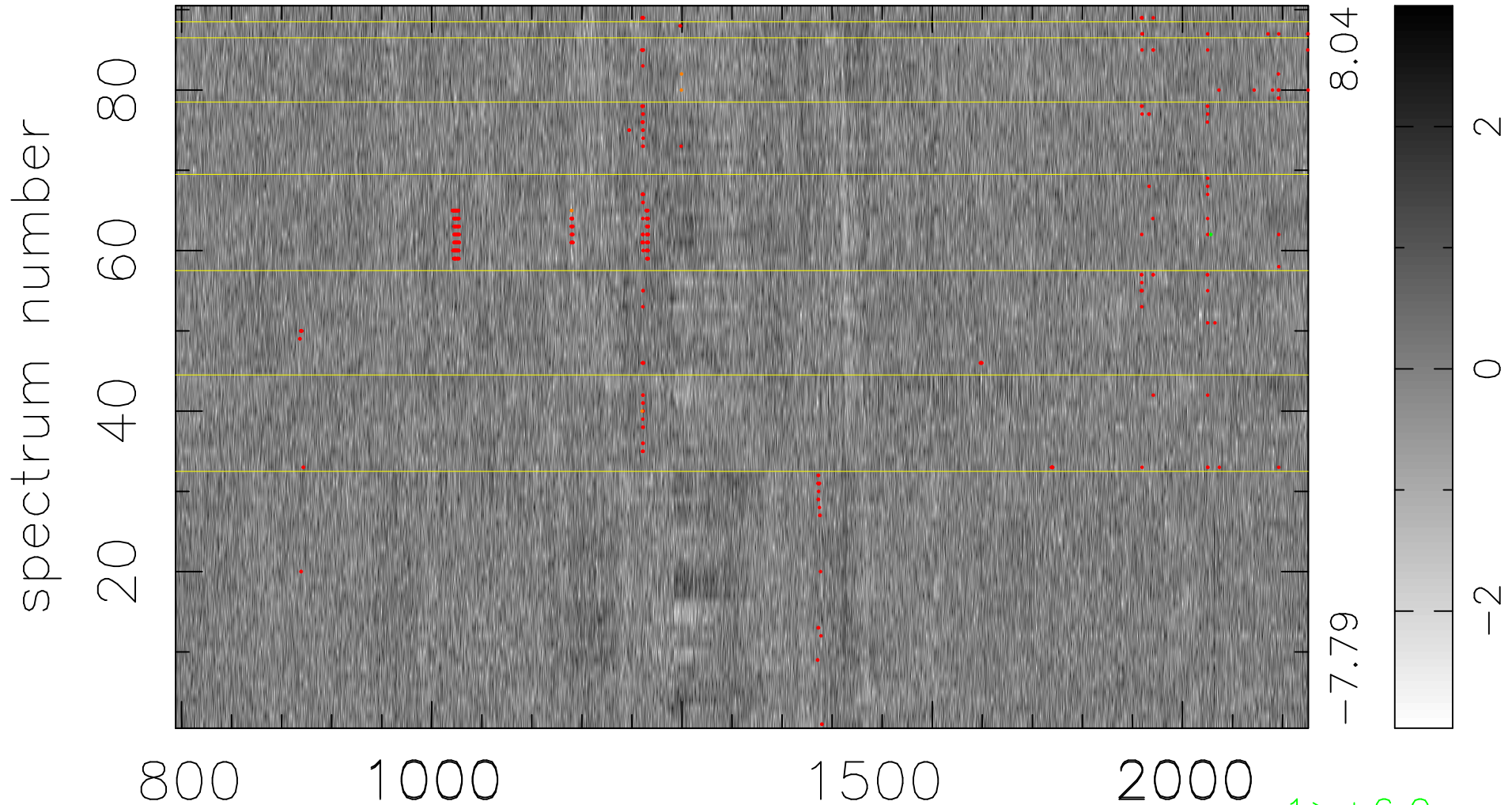


$$\chi(\lambda, t) = (\text{Data} - \text{Model } \text{AC}_5\text{B}_6\text{F}) / \sigma \chi$$

$$\chi^2 / (407430 - 5365) = 0.990 \Rightarrow 1.007$$

4527x90



bad:407=0.10%

λ (Å) $z = 3.59357$

1 > +6.0 σ

5 < -6.0 σ