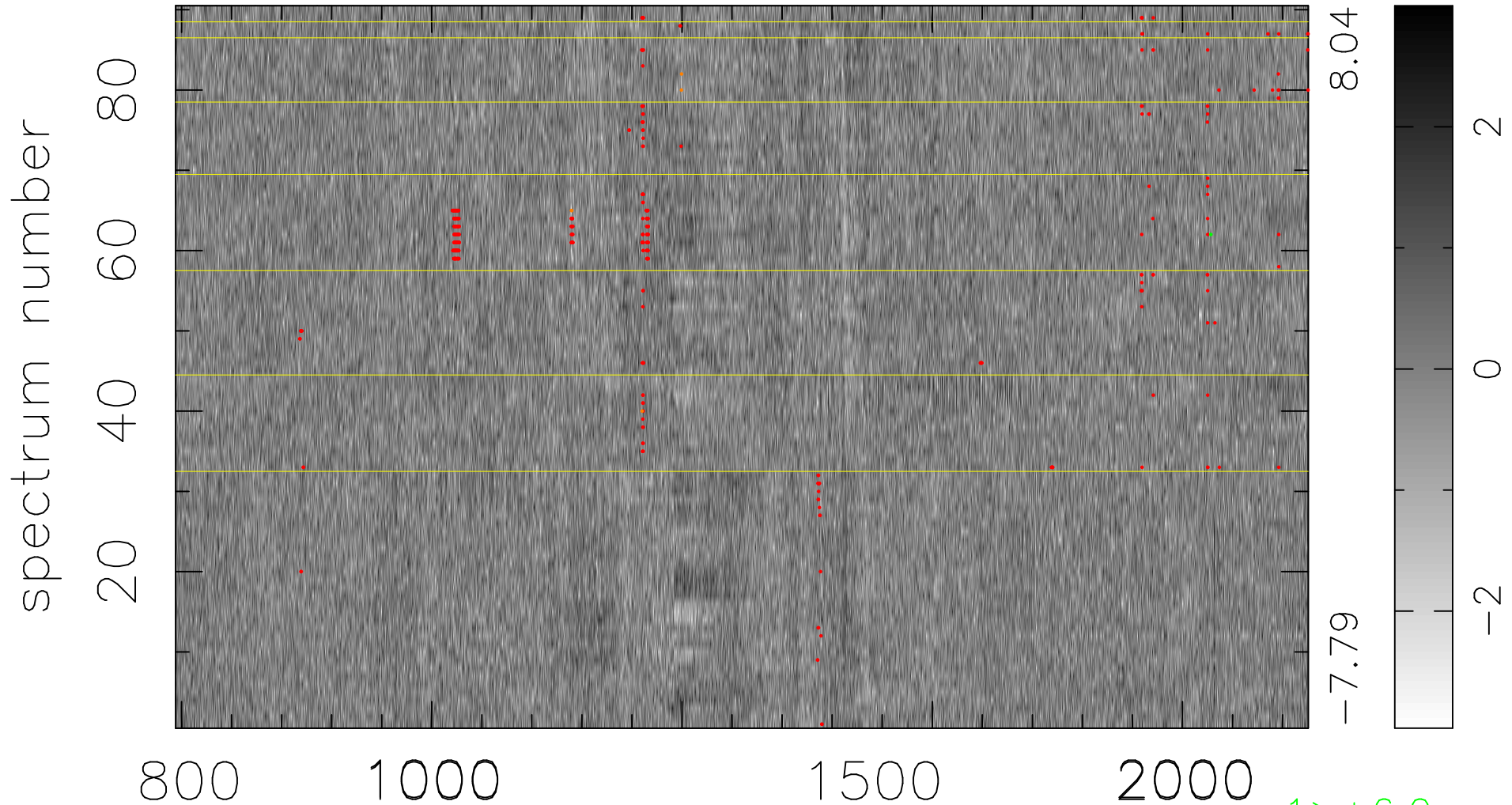


$$\chi(\lambda,t) = ( \text{Data} - \text{Model } AC_5 ) / \sigma \chi$$

$$\chi^2 / (407430 - 5112) = 0.990 \Rightarrow 1.007$$

4527x90



bad:407=0.10%

$\lambda$  (Å)  $z = 3.59357$

1 > +6.0 $\sigma$

5 < -6.0 $\sigma$