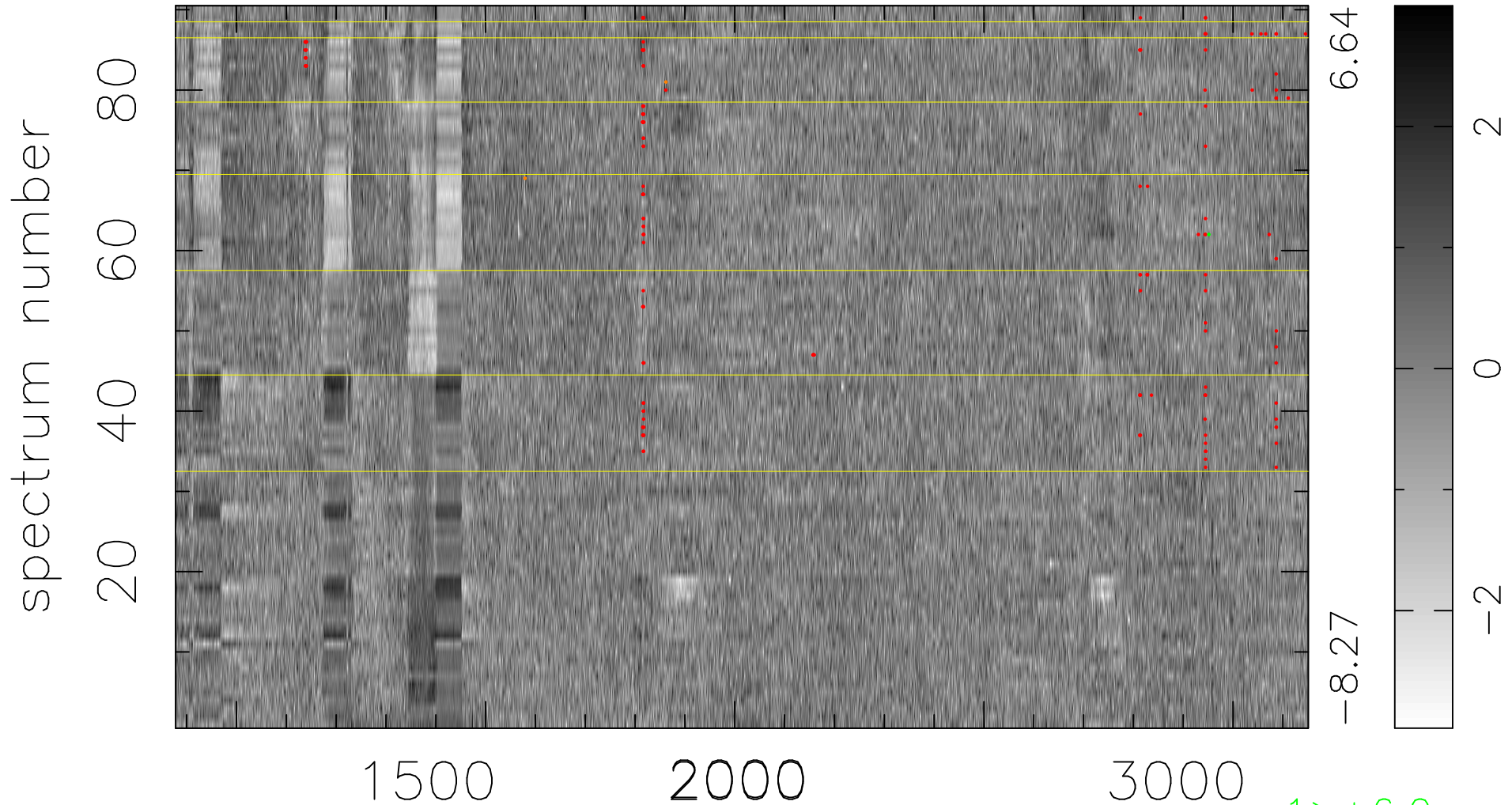


$$\chi(\lambda, t) = (\text{Data} - \text{Model } AC_5) / \sigma \chi$$

$$\chi^2 / (409230 - 5214) = 1.534 \Rightarrow 1.008$$

4547 × 90



bad:166=0.041% λ (Å) $z = 2.04246$

1 > +6.0σ

2 < -6.0σ