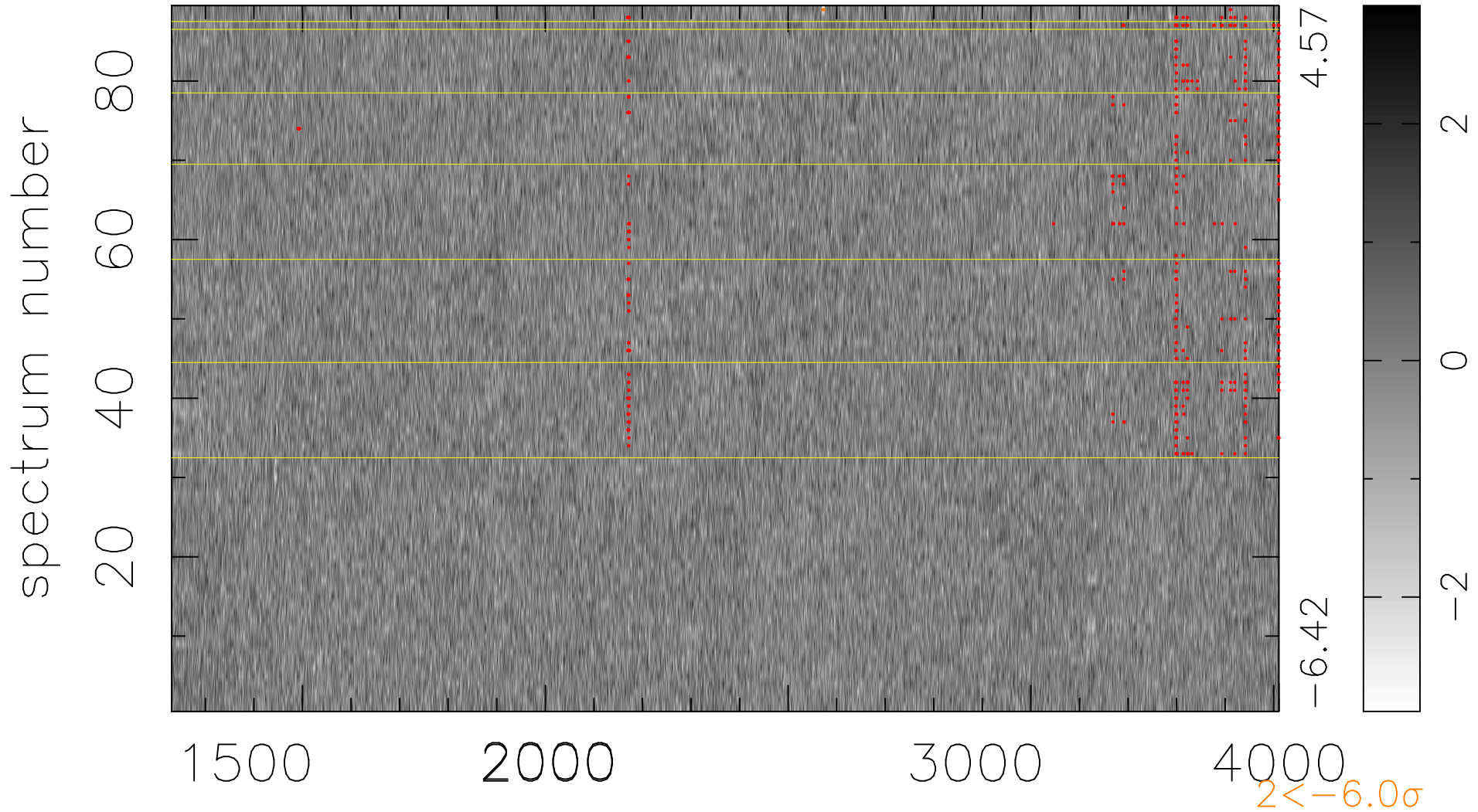


$$\chi(\lambda, t) = ( \text{Data} - \text{Model } \text{AC}_5\text{B}_4\text{F} ) / \sigma \chi$$

$$\chi^2 / (405929 - 5171) = 0.942 \Rightarrow 1.007$$

4561 × 89



bad:438=0.11%

$\lambda$  (Å)  $z = 1.58344$