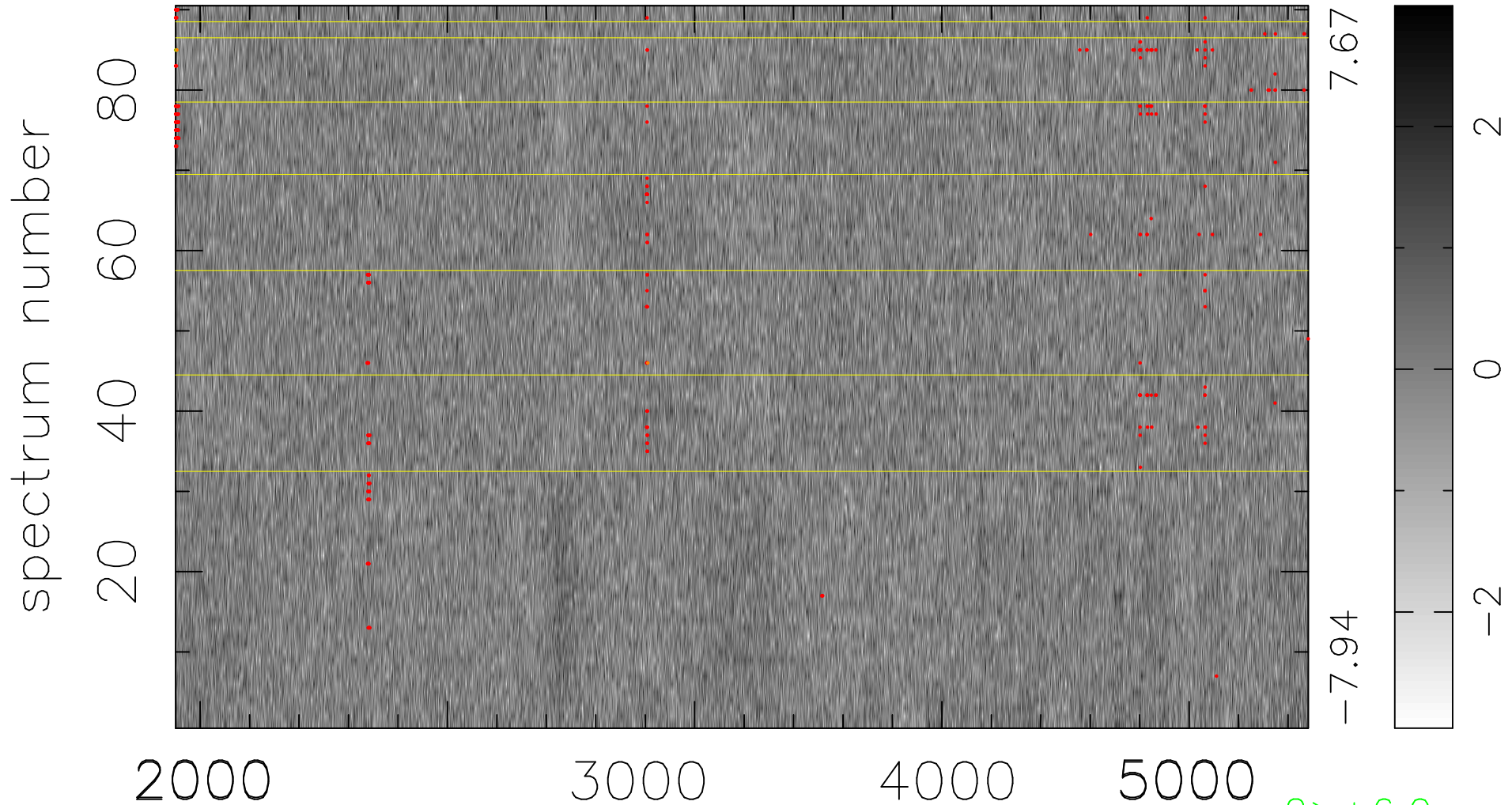


$$\chi(\lambda, t) = ( \text{Data} - \text{Model AC}_5\text{F} ) / \sigma \chi$$

$$\chi^2 / (412380 - 4957) = 0.913 \Rightarrow 1.004$$

4582x90



bad:311=0.075%  $\lambda$  (Å)  $z = 0.84383$

2 > +6.0 $\sigma$

4 < -6.0 $\sigma$