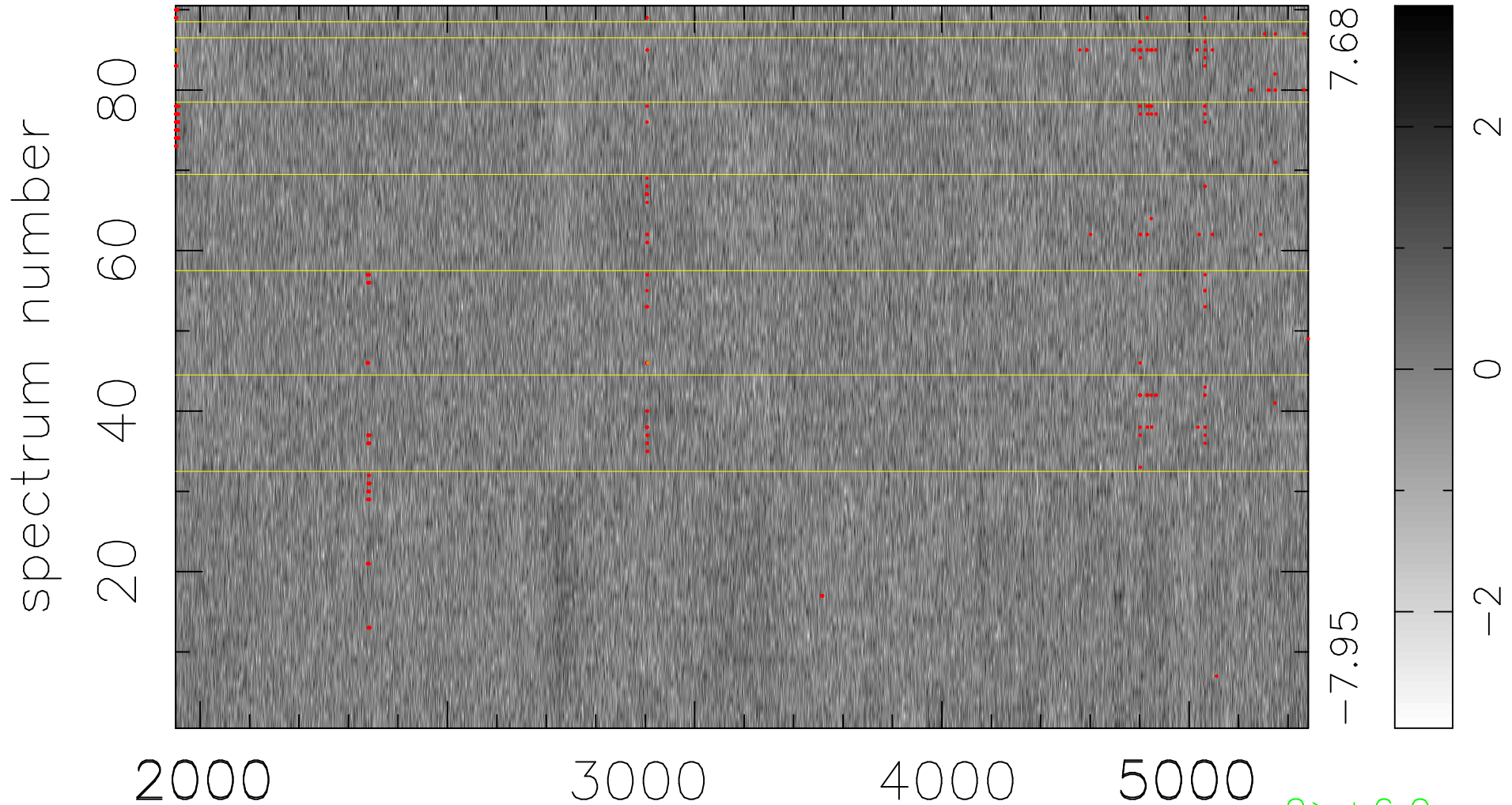


$$\chi(\lambda,t) = (\text{Data} - \text{Model } AC_5) / \sigma \chi$$

$$\chi^2 / (412380 - 4867) = 0.913 \Rightarrow 1.005$$

4582x90



bad:311=0.075% λ (Å) $z = 0.84383$

2 > +6.0σ

4 < -6.0σ