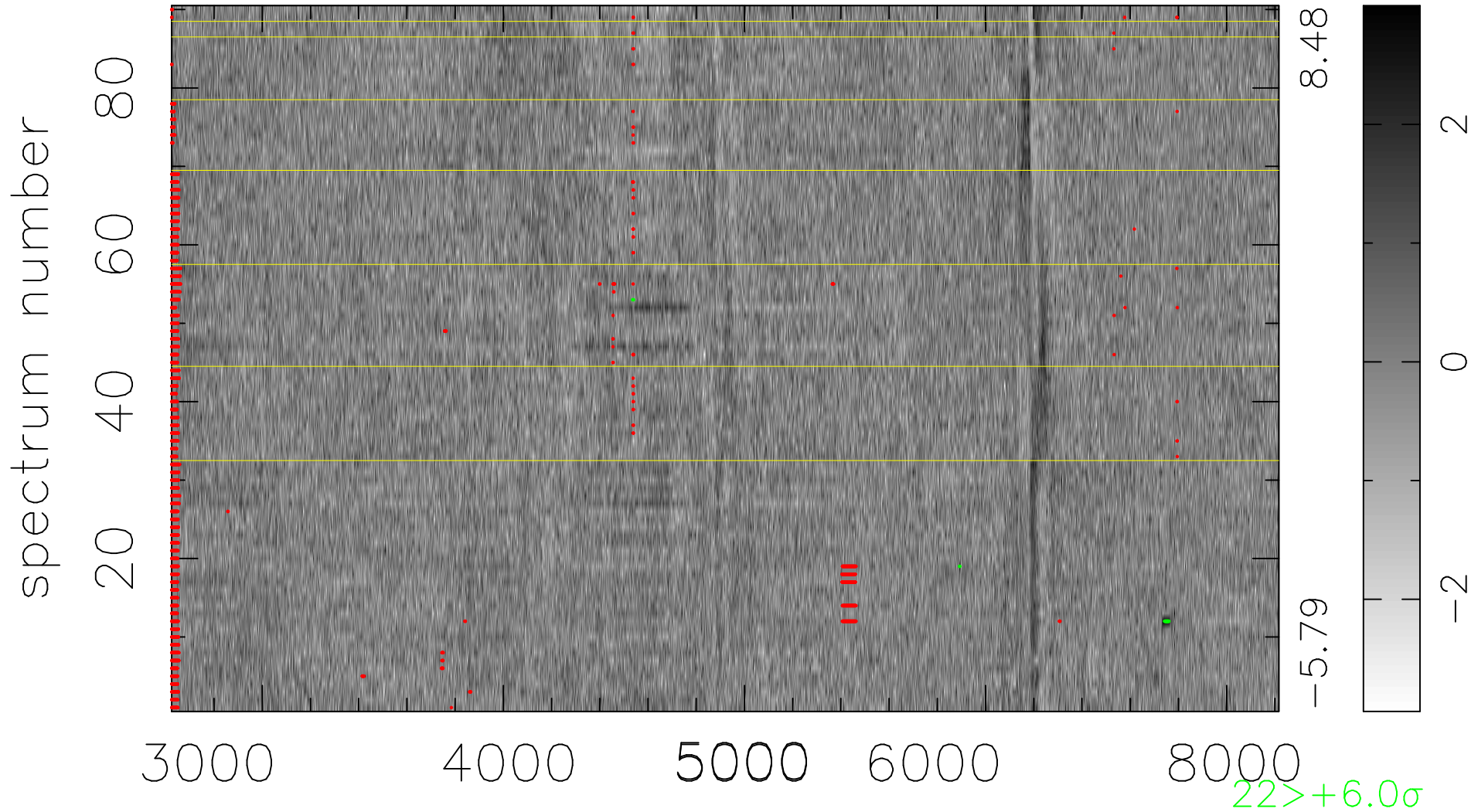


$$\chi(\lambda, t) = ( \text{Data} - \text{Model } \text{AC}_5\text{B}_3\text{F} ) / \sigma \chi$$

$$\chi^2 / (413370 - 5104) = 0.943 \Rightarrow 1.006$$

4593x90



bad:2421=0.59%  $\lambda$  (Å)  $z = 0.23782$