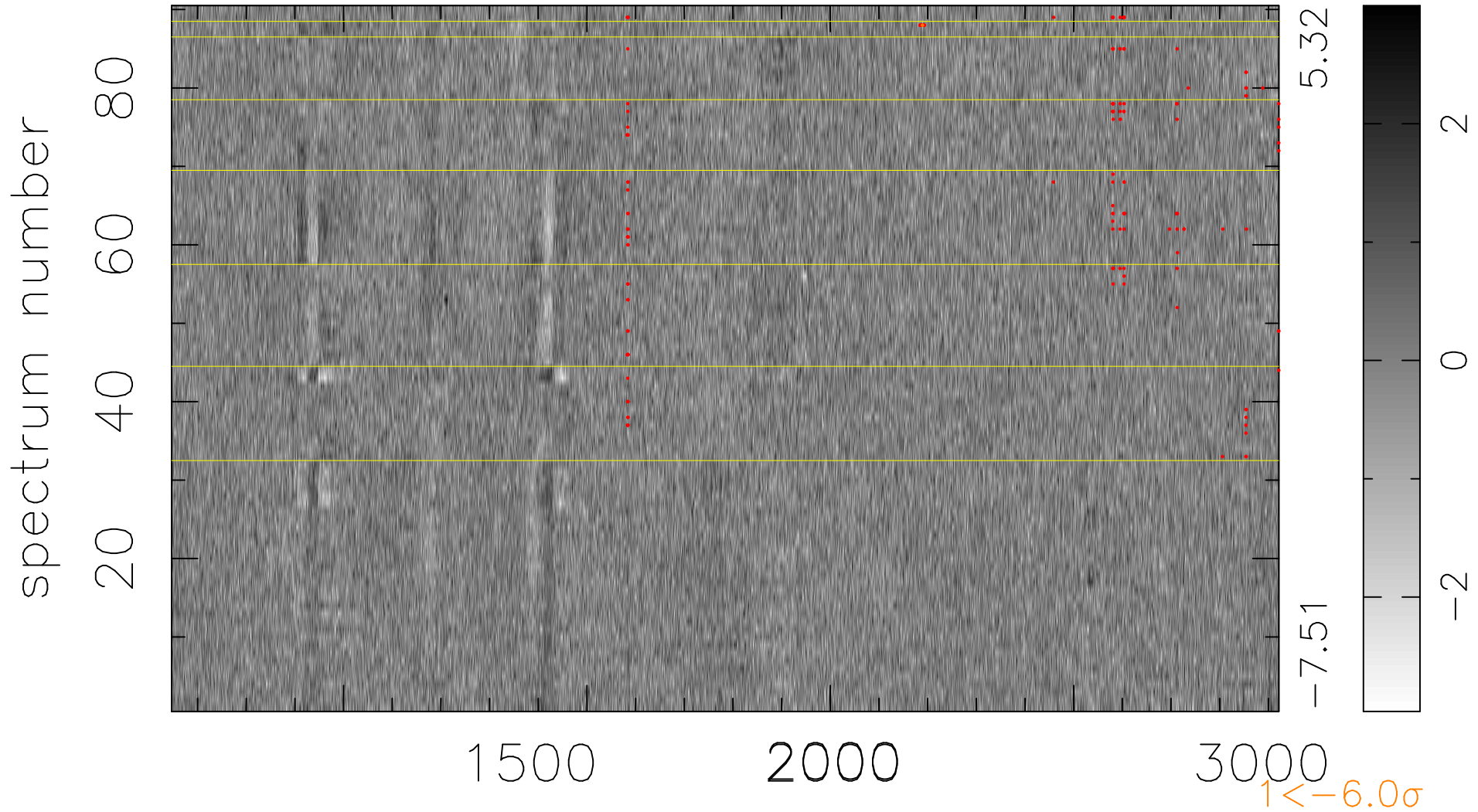


$$\chi(\lambda, t) = (\text{Data} - \text{Model AC}_5\text{F}) / \sigma \chi$$

$$\chi^2 / (409500 - 5319) = 0.922 \Rightarrow 1.007$$

4550x90



5.32
-7.51

2
0
-2

$1 < -6.0\sigma$

bad:162=0.040% λ (Å) $z = 2.38627$