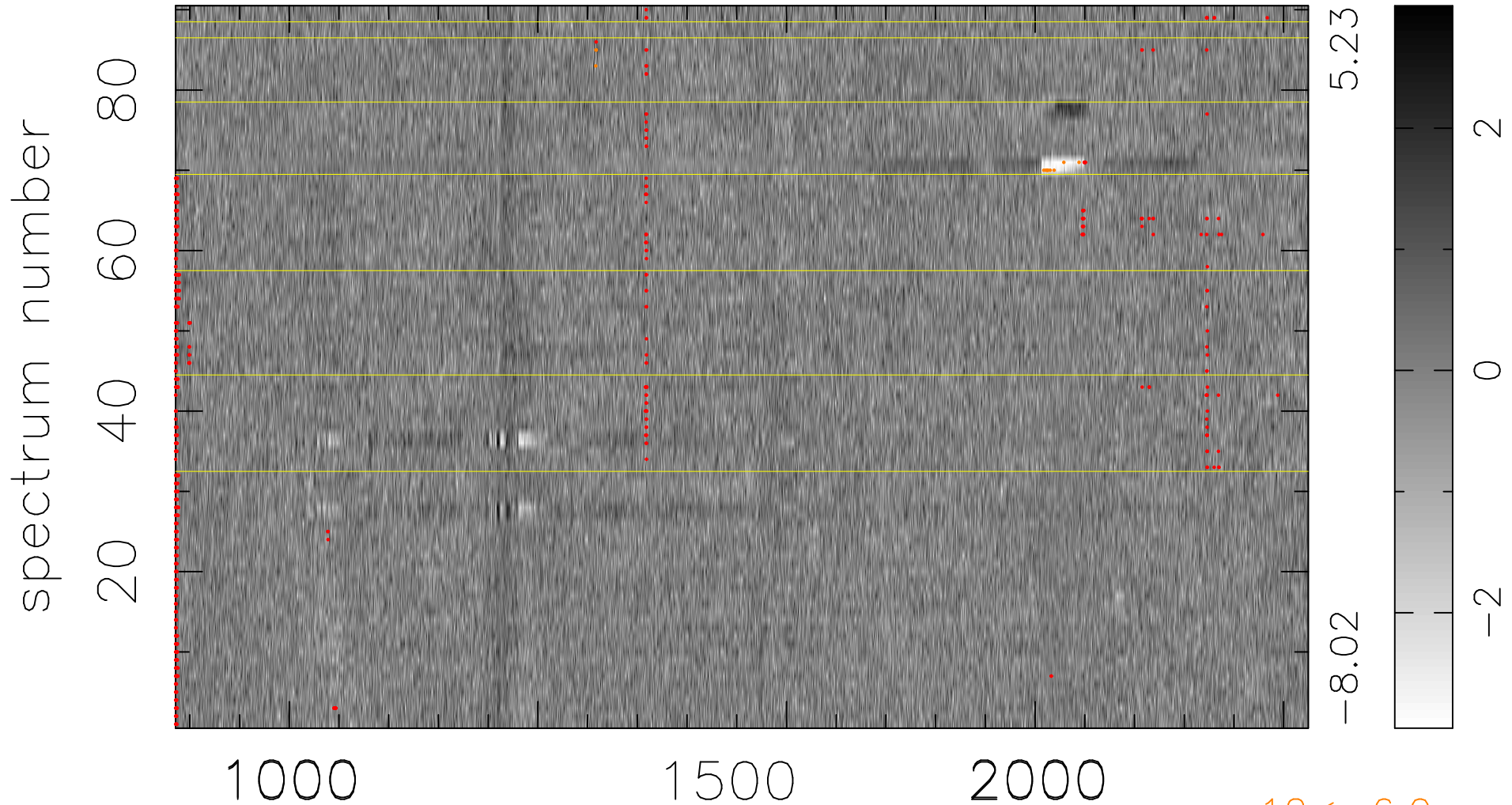


$$\chi(\lambda, t) = (\text{Data} - \text{Model } \text{AC}_5\text{B}_6\text{F}) / \sigma \chi$$

$$\chi^2 / (410130 - 5406) = 0.957 \Rightarrow 1.007$$

4557x90



bad:667=0.16%

λ (Å) $z = 3.00788$

$12 < -6.0\sigma$