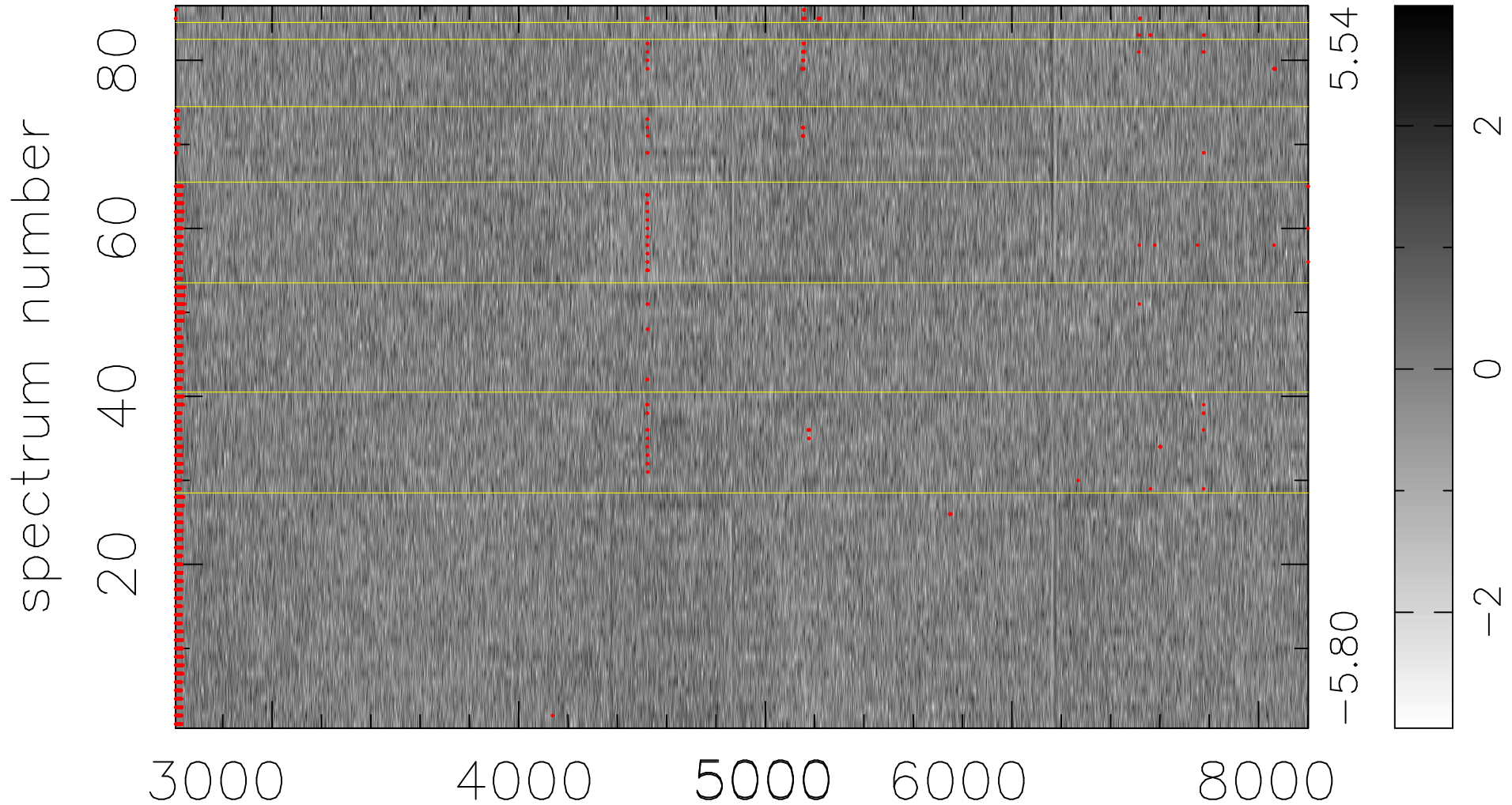


$$\chi(\lambda, t) = (\text{Data} - \text{Model } \text{AC}_5\text{B}_3\text{F}) / \sigma \chi$$

$$\chi^2 / (395084 - 5164) = 0.962 \Rightarrow 1.005$$

4594x86



bad:1973=0.50% λ (Å) $z = 0.24261$