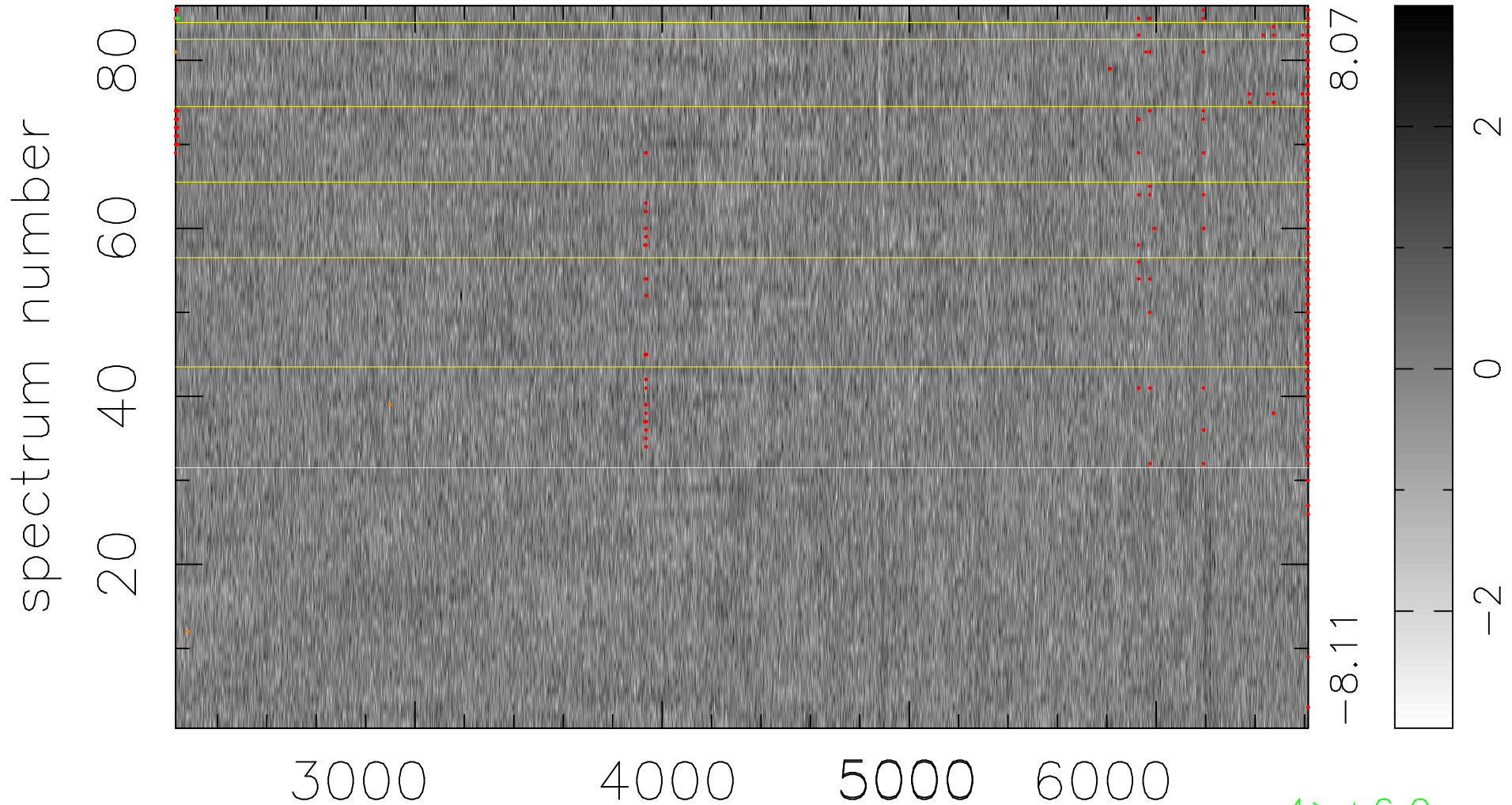


$$\chi(\lambda, t) = (\text{Data} - \text{Model } \text{AC}_5\text{B}_4\text{F}) / \sigma \chi$$

$$\chi^2 / (394310 - 5212) = 0.943 \Rightarrow 1.007$$

4585x86



bad:432=0.11%

λ (Å) $z = 0.42261$

4 > +6.0σ

8 < -6.0σ