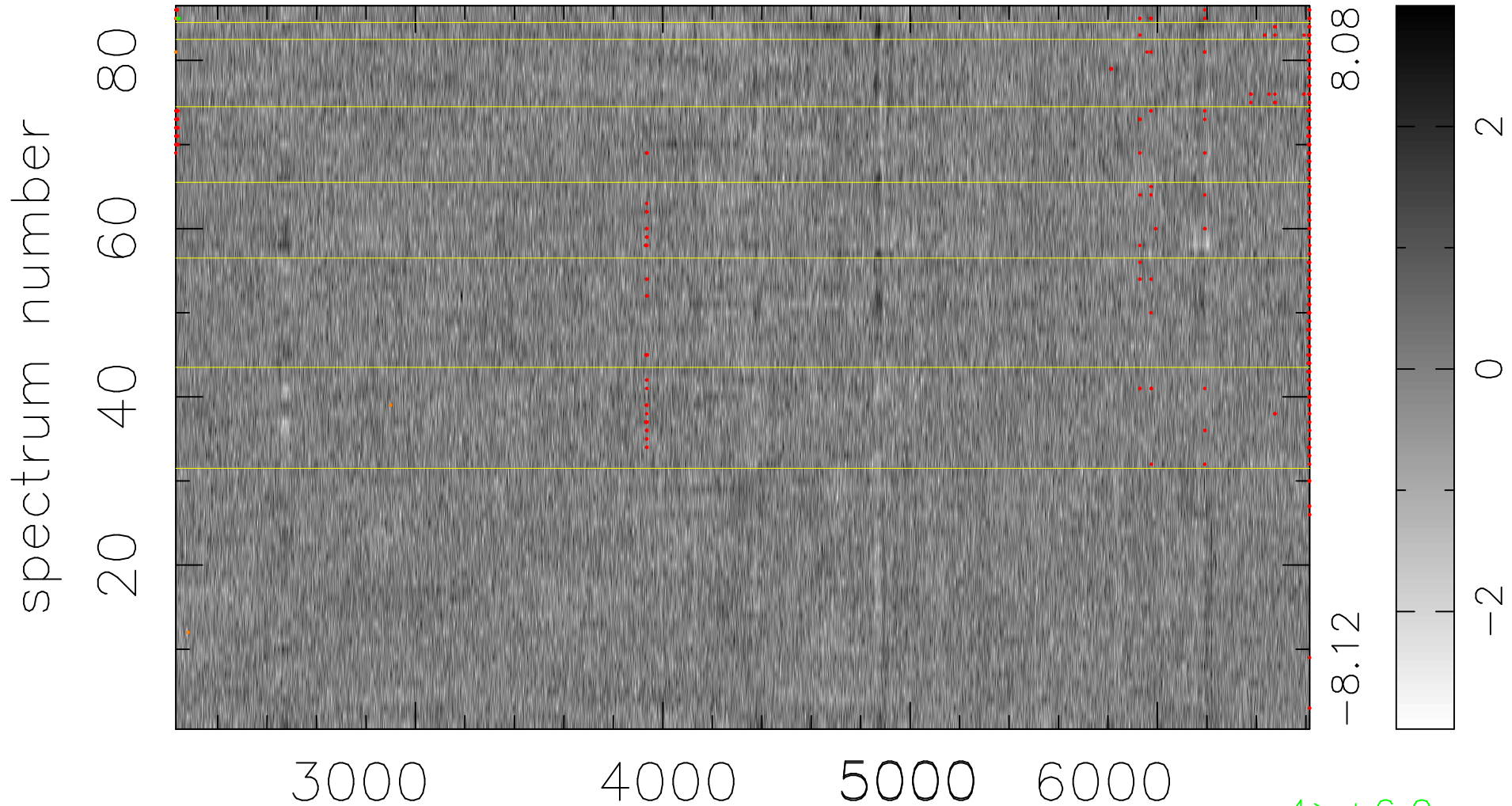


$$\chi(\lambda, t) = ( \text{Data} - \text{Model AC}_5\text{F} ) / \sigma \chi$$

$$\chi^2 / (394310 - 5053) = 0.954 \Rightarrow 1.007$$

4585x86



bad:432=0.11%

$\lambda$  (Å)  $z = 0.42261$

4 > +6.0 $\sigma$

8 < -6.0 $\sigma$