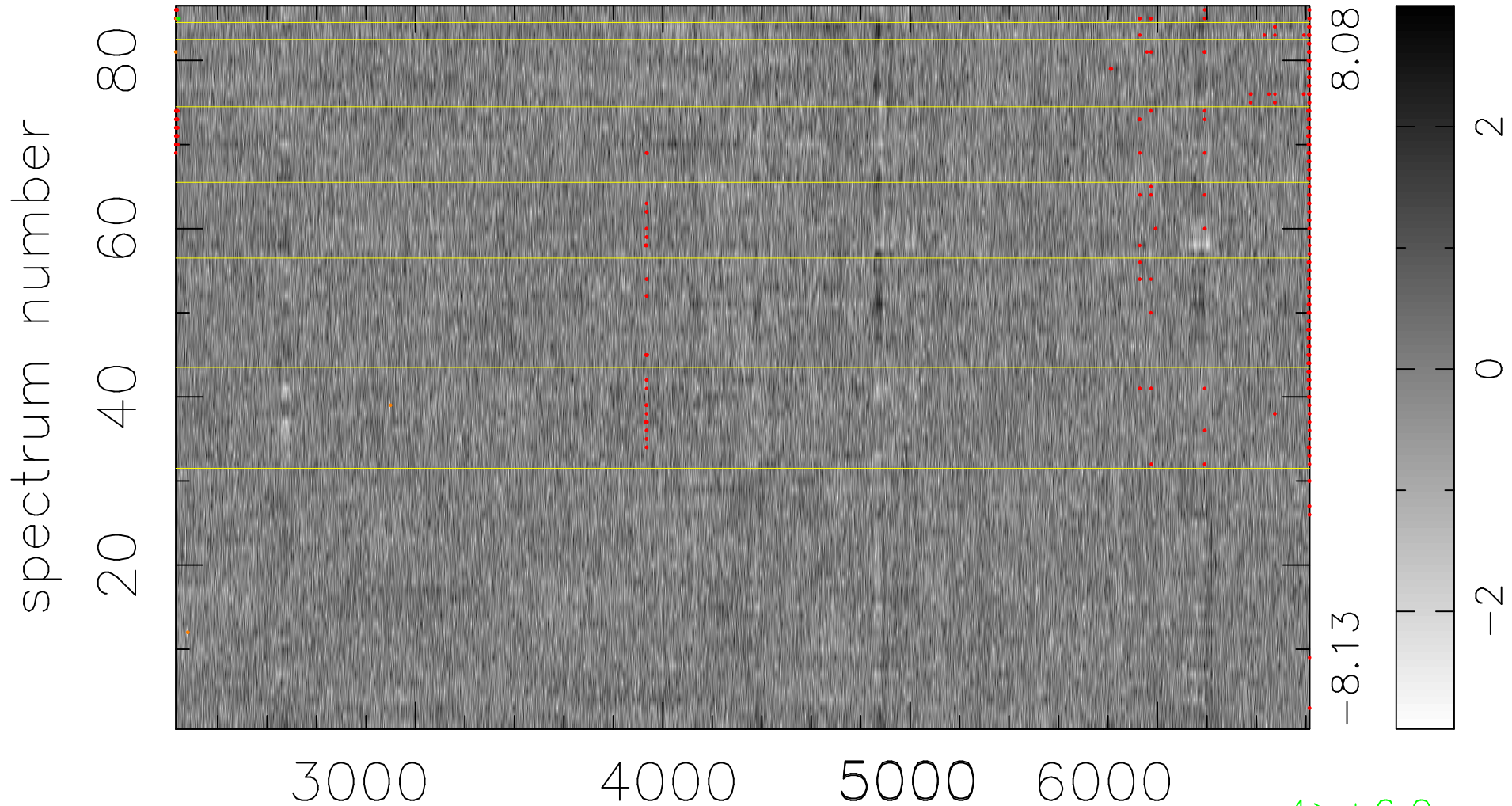


$$\chi(\lambda, t) = ( \text{Data} - \text{Model } AC_5 ) / \sigma \chi$$

$$\chi^2 / (394310 - 4967) = 0.961 \Rightarrow 1.008$$

4585x86



bad:432=0.11%

$\lambda$  (Å)  $z = 0.42261$

4 > +6.0σ

8 < -6.0σ