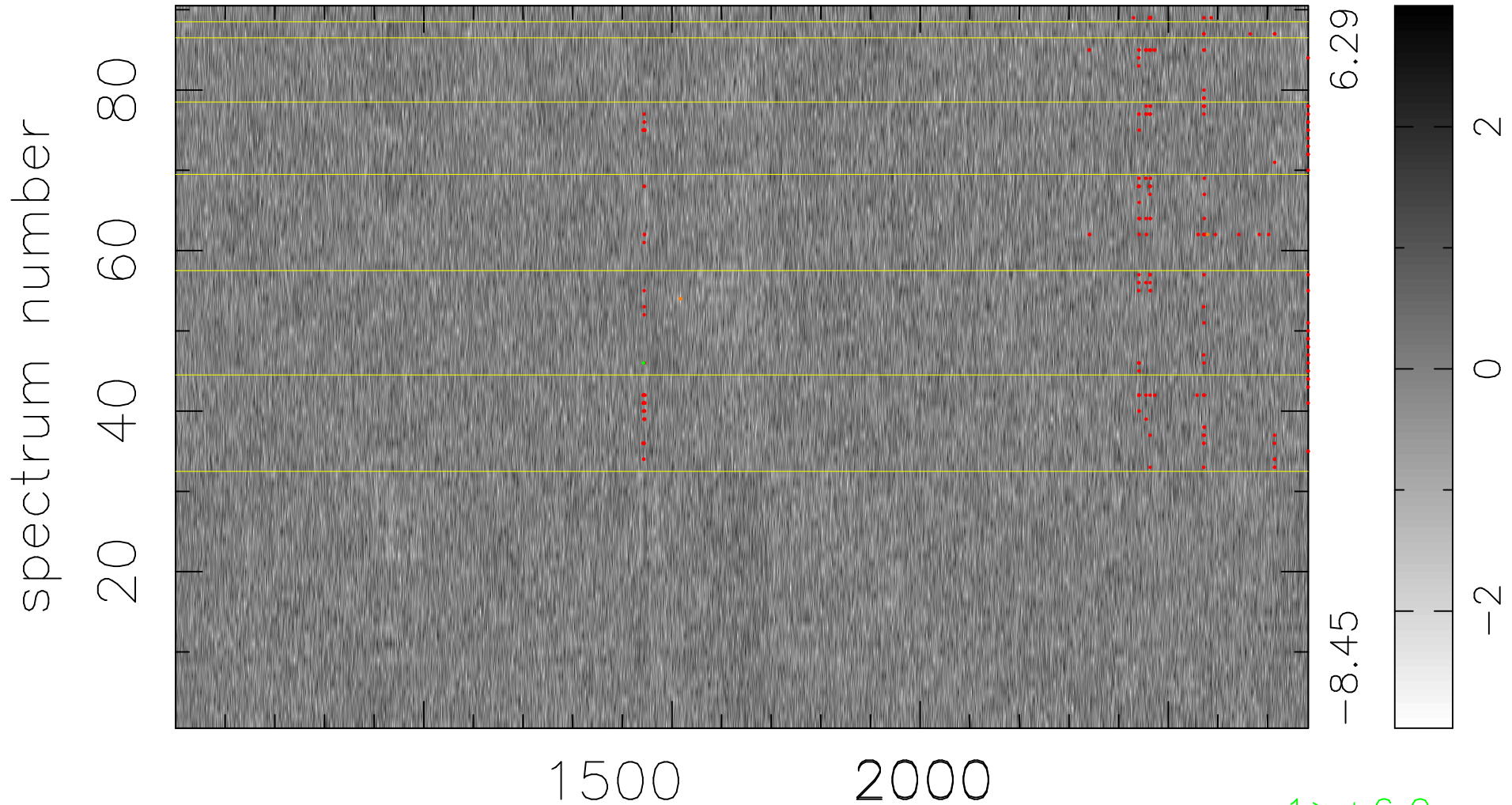


$$\chi(\lambda,t) = (\text{Data} - \text{Model } AC_5) / \sigma \chi$$

$$\chi^2 / (410850 - 5215) = 0.916 \Rightarrow 1.007$$

4565x90



bad:219=0.053% λ (Å) $z = 2.61153$

1 > +6.0 σ

3 < -6.0 σ