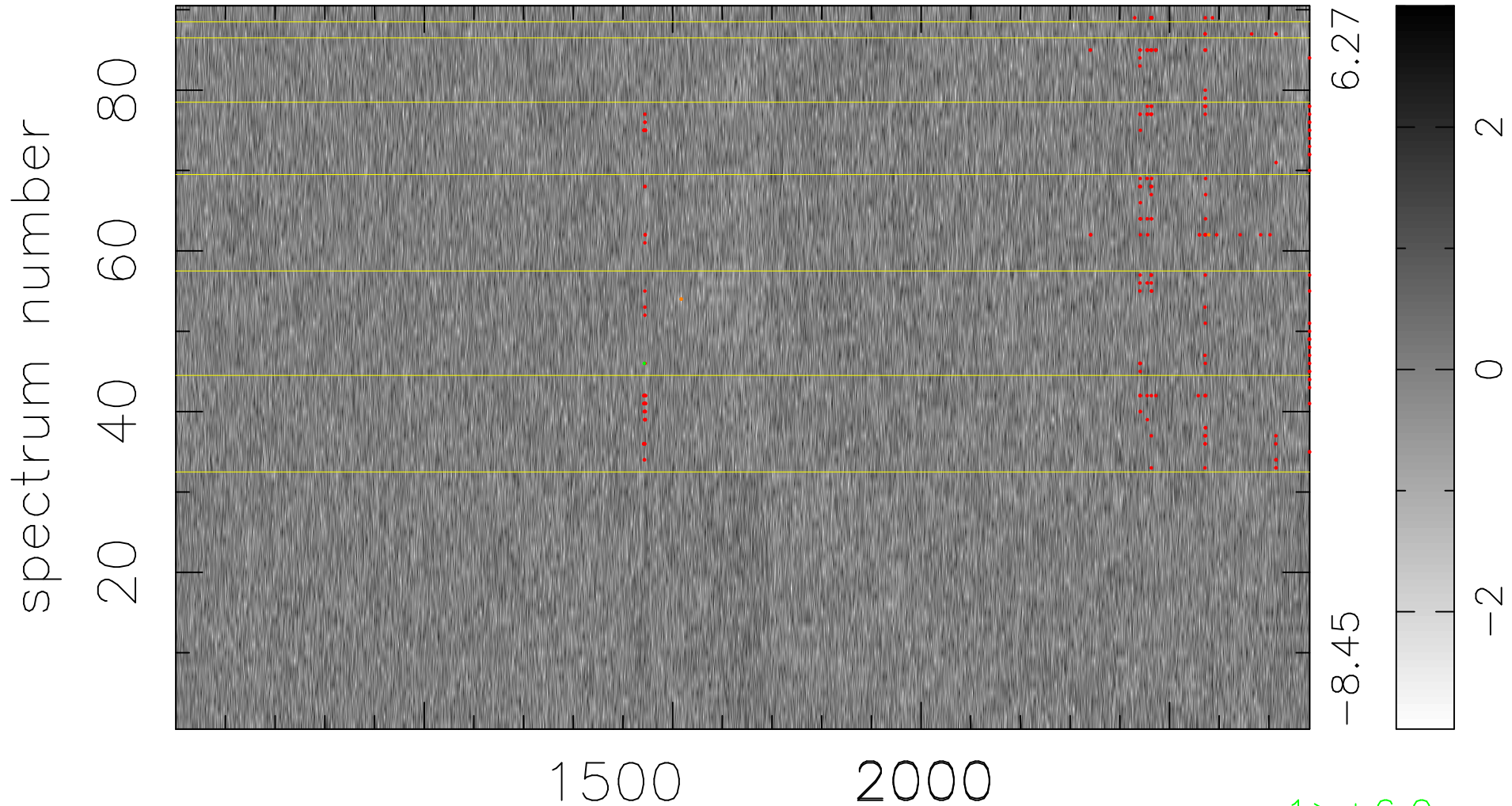


$$\chi(\lambda, t) = ( \text{Data} - \text{Model } \text{AC}_5\text{B}_7\text{F} ) / \sigma \chi$$

$$\chi^2 / (410850 - 5450) = 0.914 \Rightarrow 1.008$$

4565x90



bad:219=0.053%  $\lambda$  (Å)  $z = 2.61153$

1 > +6.0 $\sigma$

3 < -6.0 $\sigma$