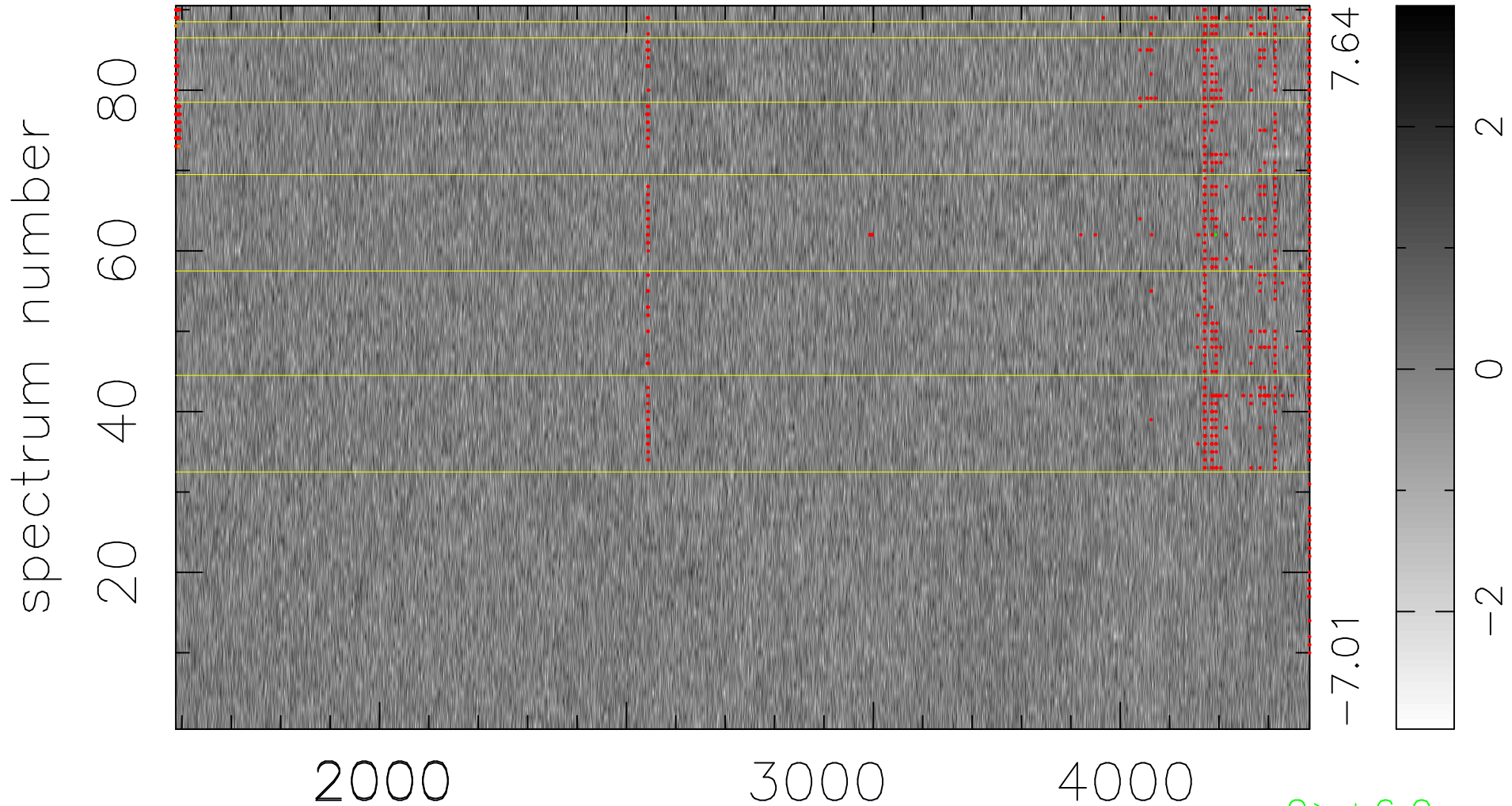


$$\chi(\lambda, t) = ( \text{Data} - \text{Model } \text{AC}_5\text{B}_3\text{F} ) / \sigma \chi$$

$$\chi^2 / (413370 - 5094) = 0.919 \Rightarrow 1.008$$

4593x90



bad:971=0.23%

$\lambda$  (Å)  $z = 1.17671$

2 > +6.0σ

2 < -6.0σ