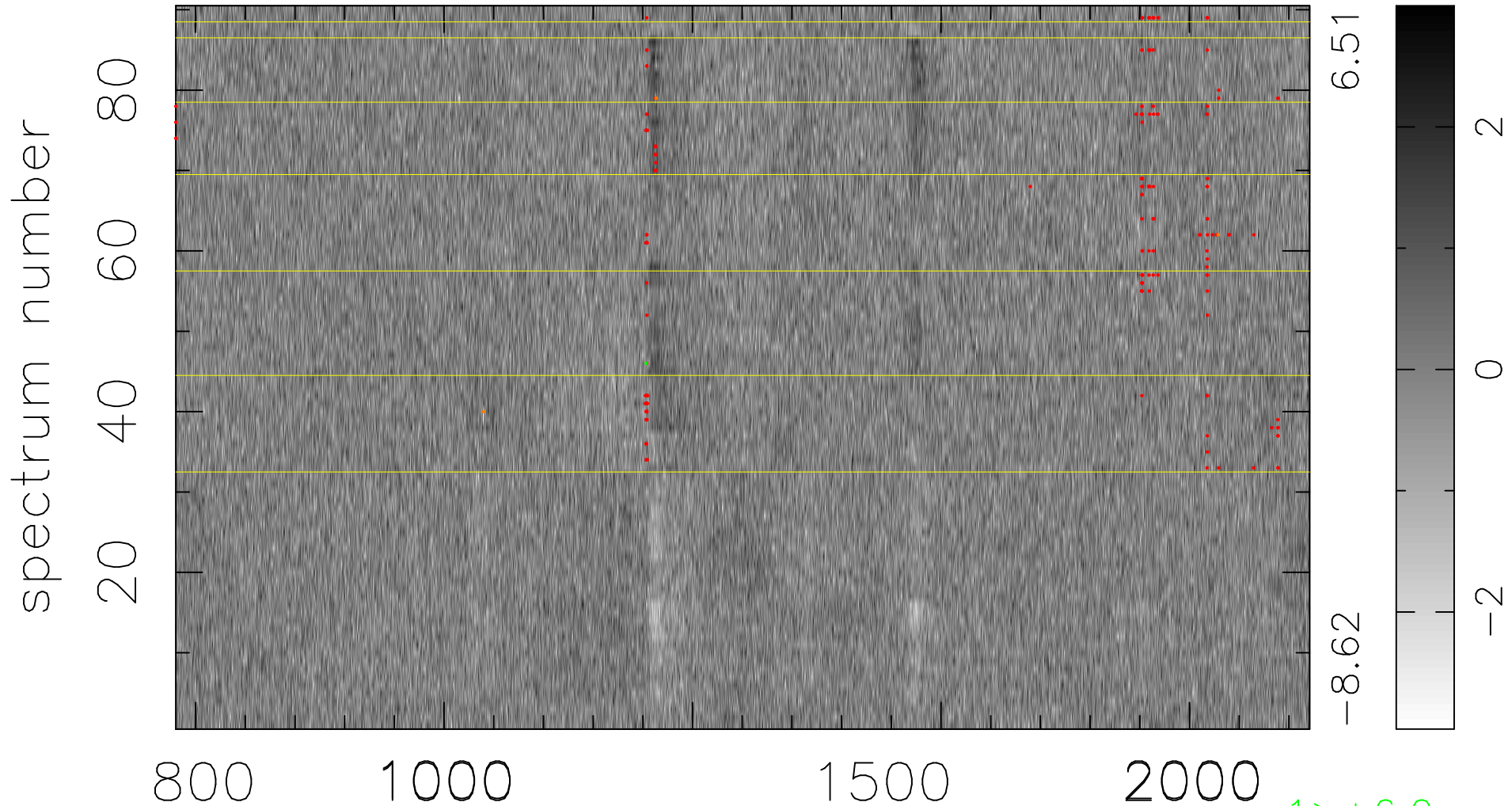


$$\chi(\lambda, t) = (\text{Data} - \text{Model AC}_5\text{F}) / \sigma \chi$$

$$\chi^2 / (410760 - 5242) = 0.938 \Rightarrow 1.007$$

4564x90



bad:194=0.047% λ (Å) $z = 3.62333$

1 > +6.0σ
3 < -6.0σ