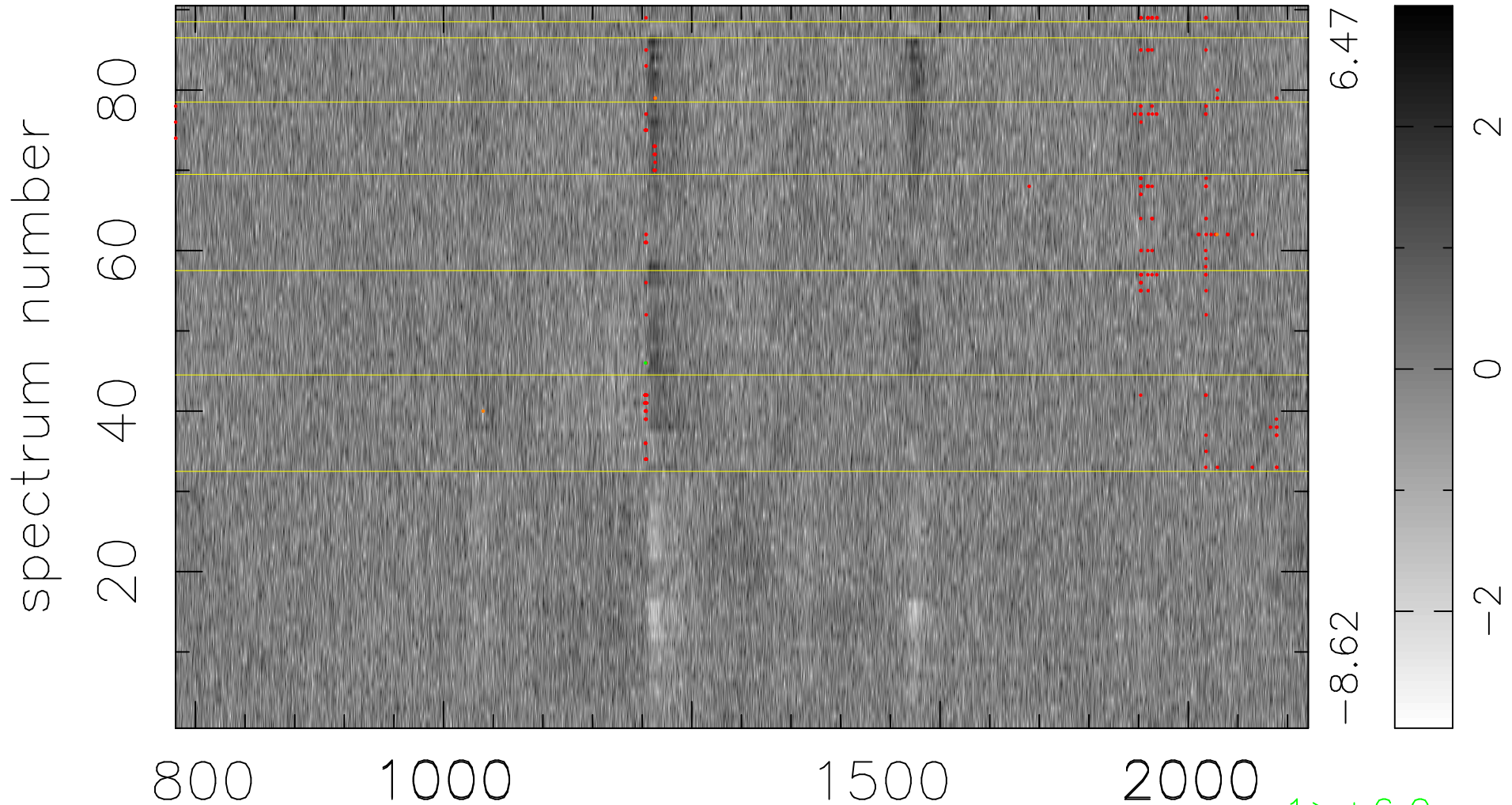


$$\chi(\lambda,t) = ( \text{Data} - \text{Model } AC_5 ) / \sigma \chi$$

$$\chi^2 / (410760 - 5152) = 0.947 \Rightarrow 1.006$$

4564x90



bad:194=0.047%  $\lambda$  (Å)  $z = 3.62333$

1 > +6.0σ  
3 < -6.0σ