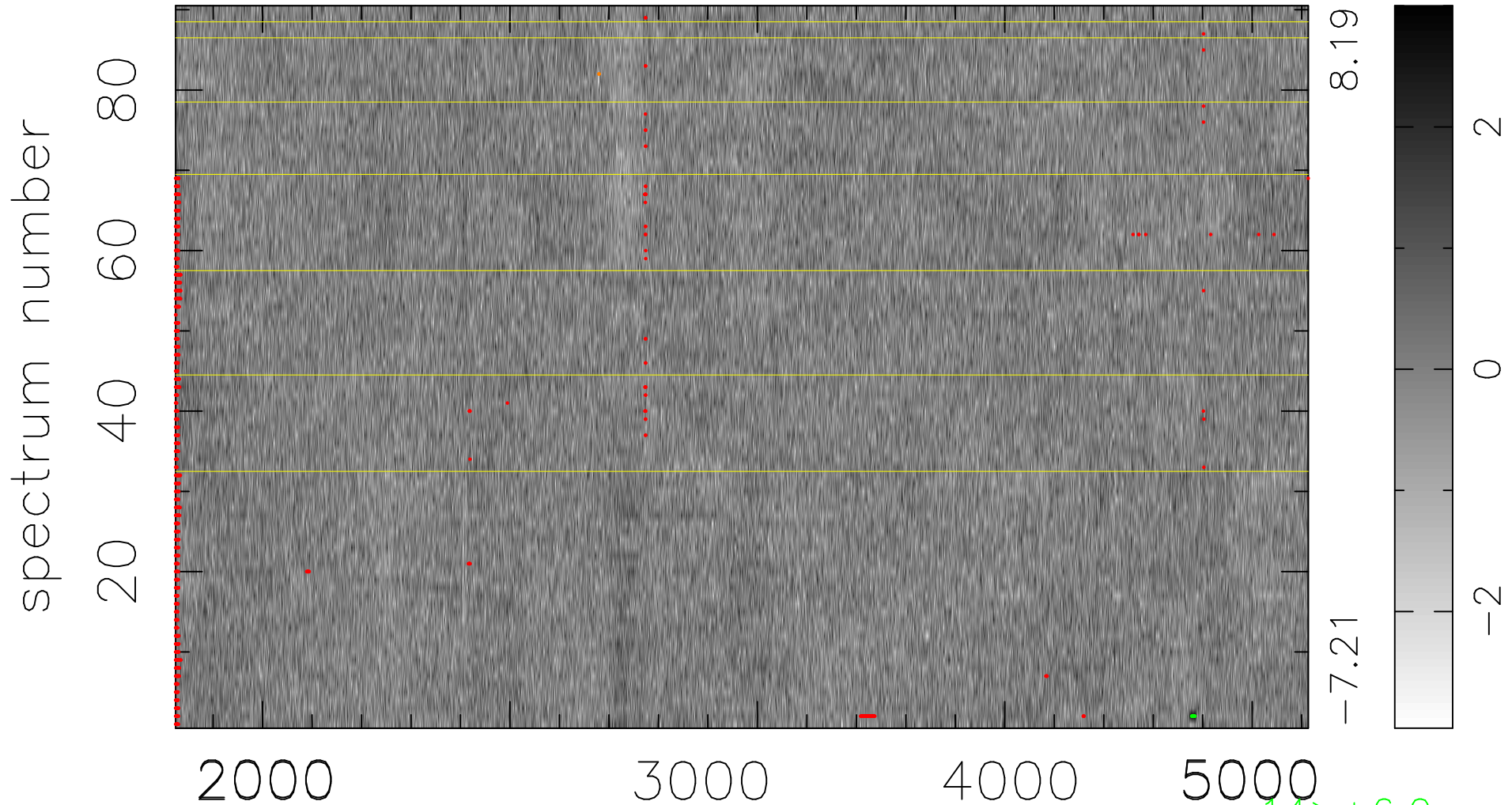


$$\chi(\lambda,t) = (\text{Data} - \text{Model } AC_5) / \sigma \chi$$

$$\chi^2 / (412110 - 4960) = 0.939 \Rightarrow 1.007$$

4579x90



bad:1032=0.25% λ (Å) $z = 0.95770$

14 > +6.0 σ

2 < -6.0 σ