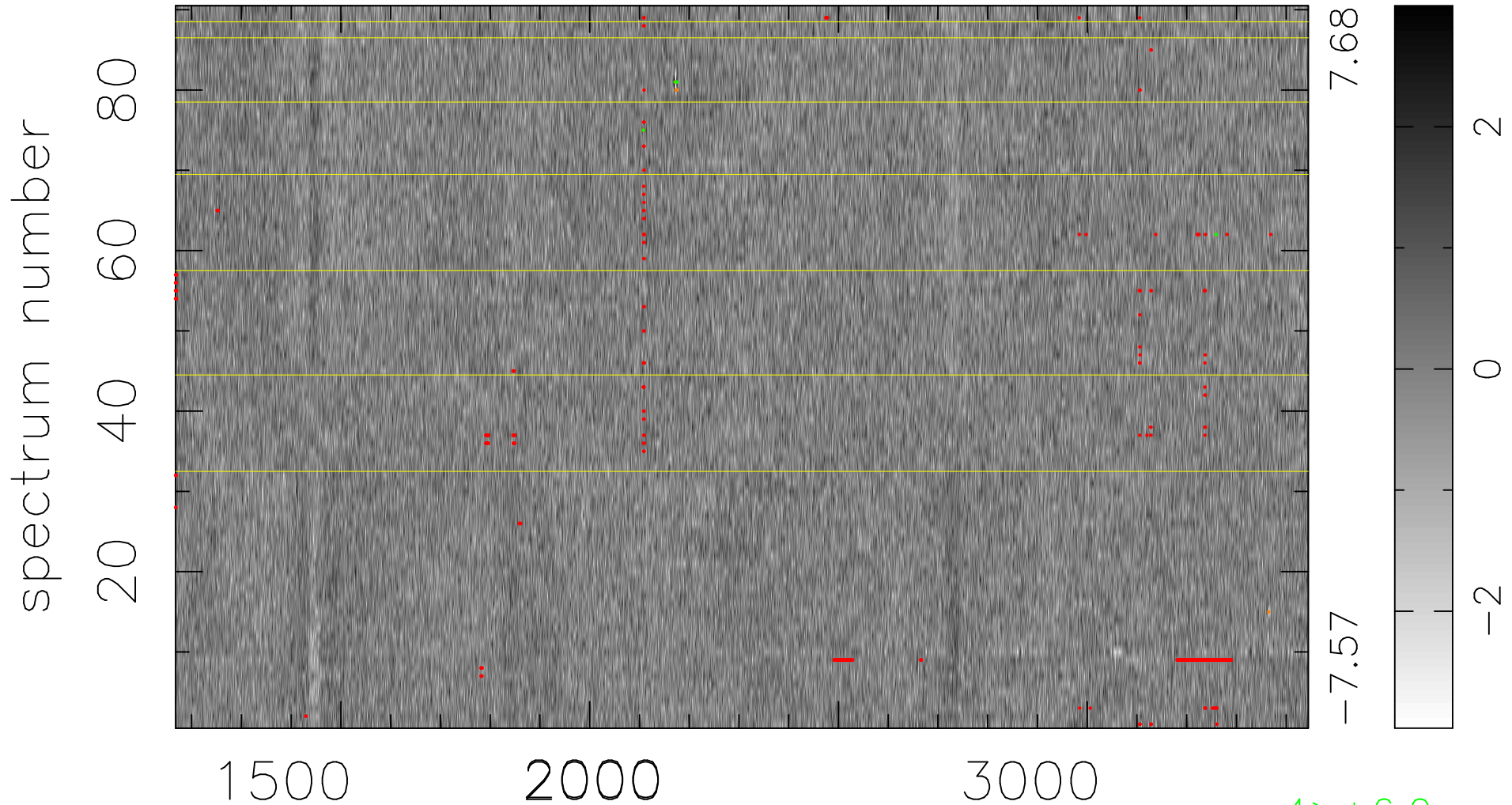


$$\chi(\lambda, t) = ( \text{Data} - \text{Model } AC_5 ) / \sigma \chi$$

$$\chi^2 / (409860 - 5023) = 0.928 \Rightarrow 1.007$$

4554x90



bad:495=0.12%

$\lambda$  (Å)  $z = 1.65917$

4 > +6.0σ

6 < -6.0σ