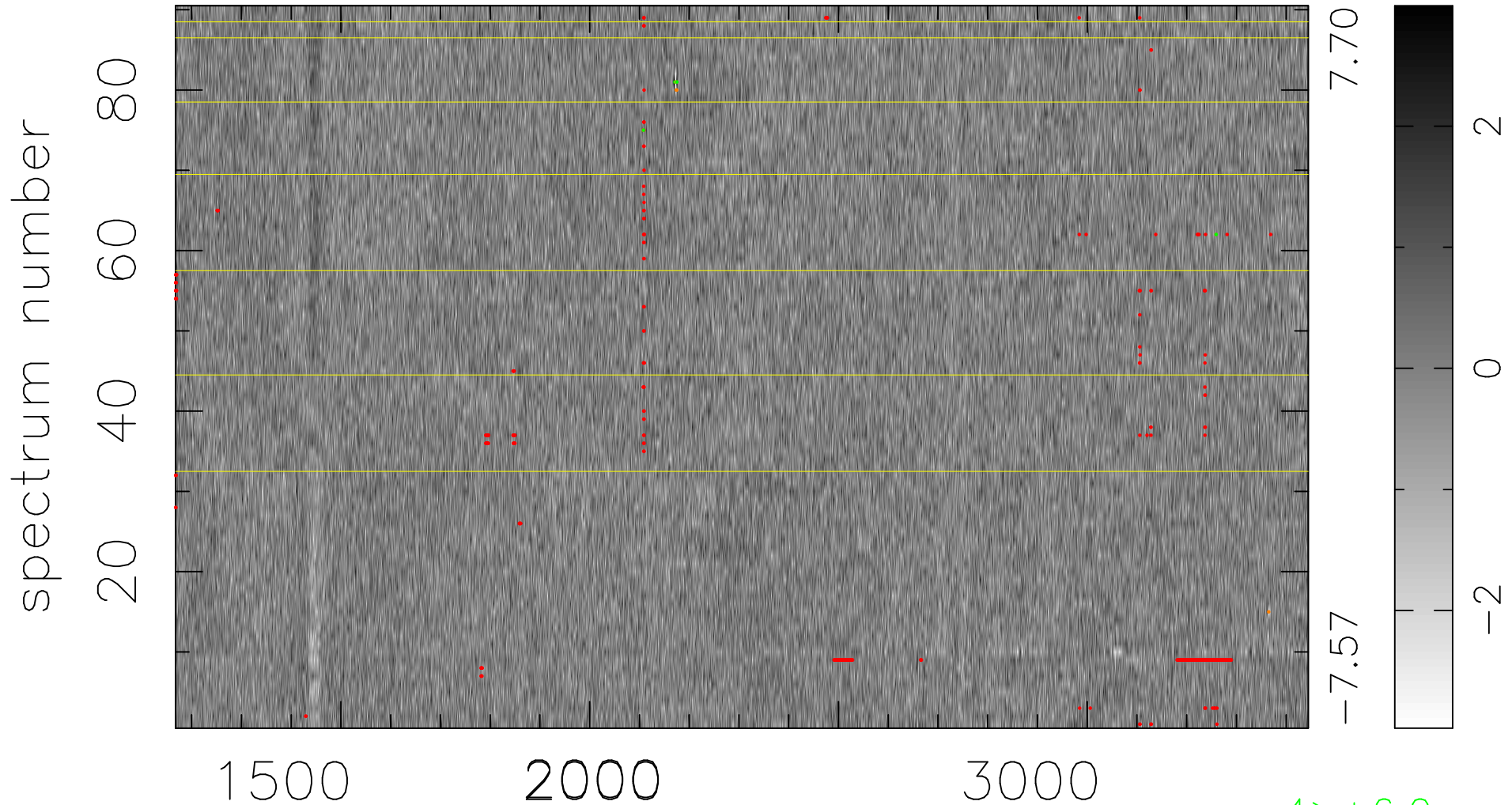


$$\chi(\lambda, t) = ( \text{Data} - \text{Model } \text{AC}_5\text{B}_5\text{F} ) / \sigma \chi$$

$$\chi^2 / (409860 - 5237) = 0.925 \Rightarrow 1.007$$

4554x90



bad:495=0.12%

$\lambda$  (Å)  $z = 1.65917$

4 > +6.0σ

6 < -6.0σ