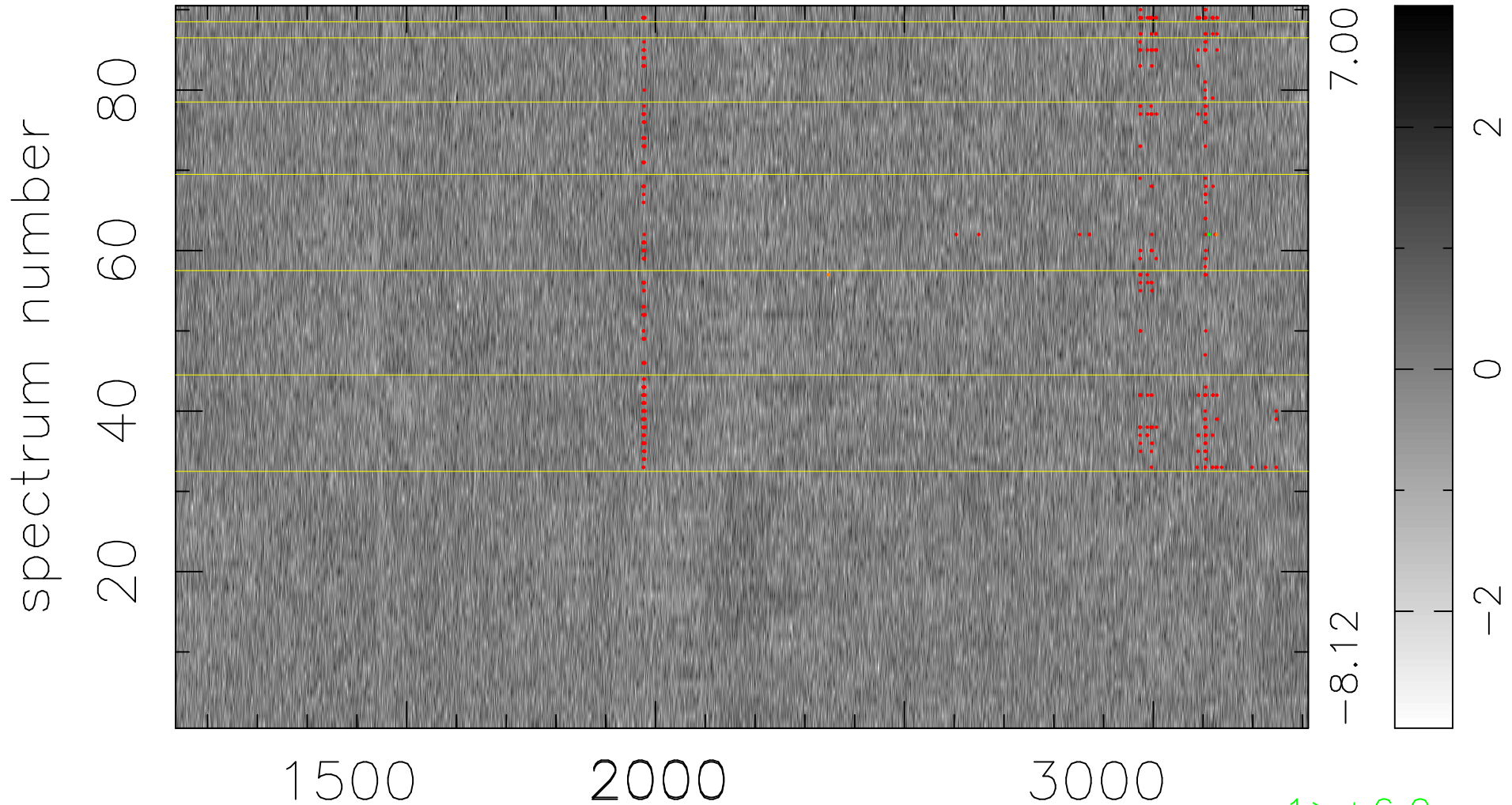


$$\chi(\lambda, t) = ( \text{Data} - \text{Model } \text{AC}_5\text{B}_5\text{F} ) / \sigma \chi$$

$$\chi^2 / (409680 - 5271) = 0.965 \Rightarrow 1.008$$

4552x90



bad:414=0.10%

$\lambda$  (Å)  $z = 1.82578$

1 > +6.0 $\sigma$

2 < -6.0 $\sigma$