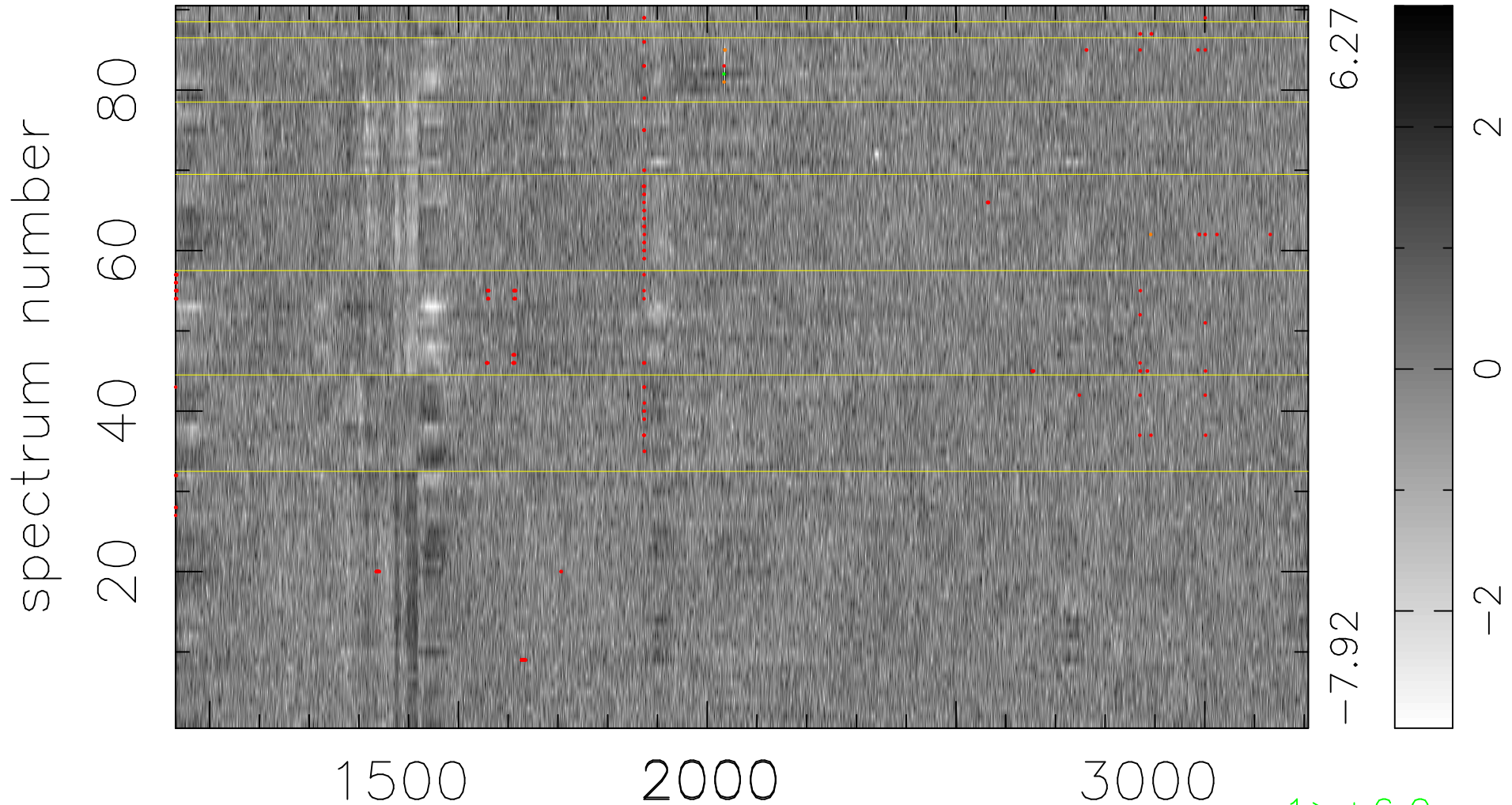


$$\chi(\lambda,t) = (\text{Data} - \text{Model } AC_5) / \sigma \chi$$

$\chi^2 / (409860 - 5130) = 0.973 \Rightarrow 1.007$

4554x90



bad:201=0.049% λ (Å) $z = 1.96406$

1 > +6.0σ

4 < -6.0σ