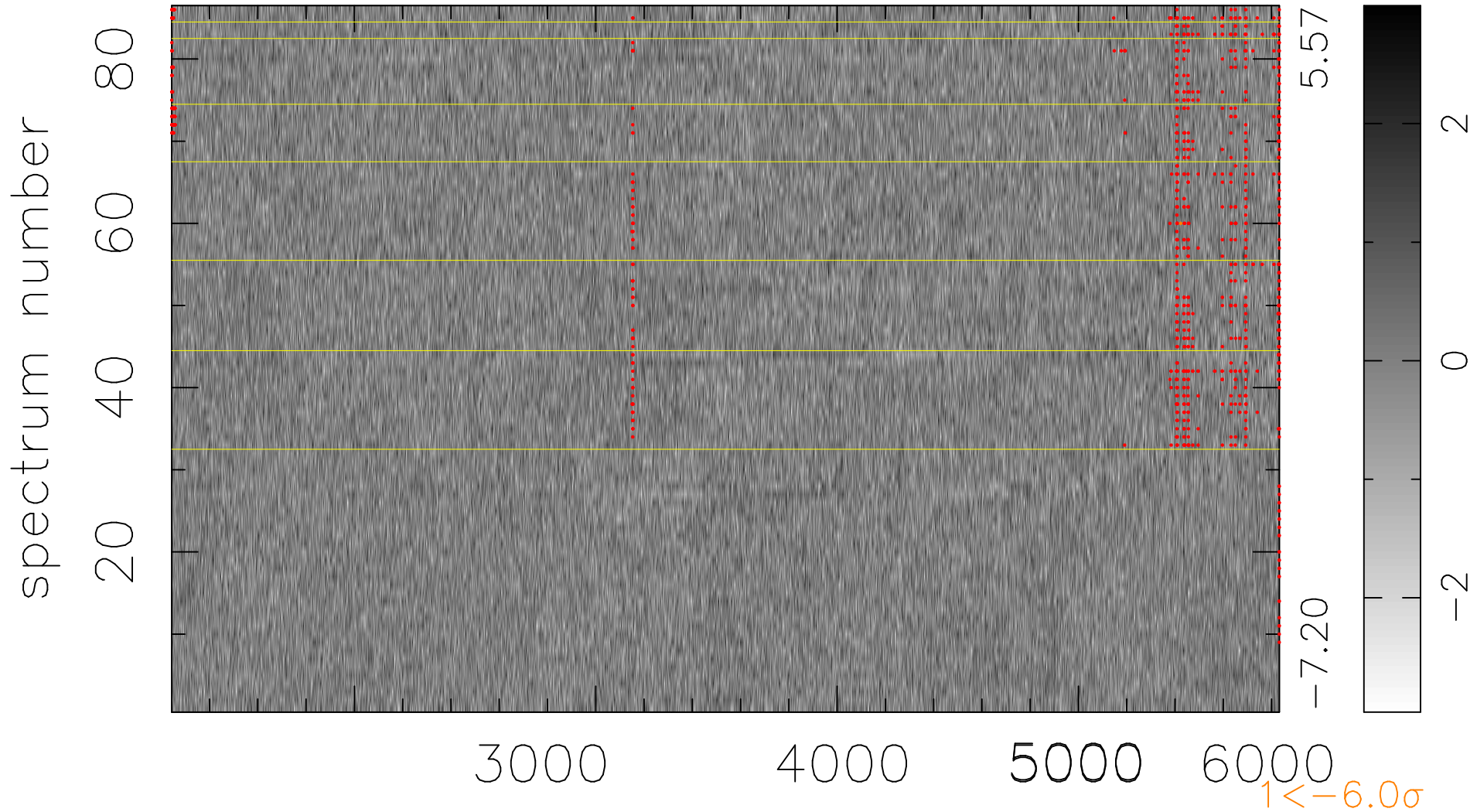


$$\chi(\lambda, t) = ( \text{Data} - \text{Model } \text{AC}_5\text{B}_3\text{F} ) / \sigma \chi$$

$$\chi^2 / (394740 - 5102) = 0.898 \Rightarrow 1.007$$

4590x86



bad:844=0.21%

$\lambda$  (Å)  $z = 0.70283$