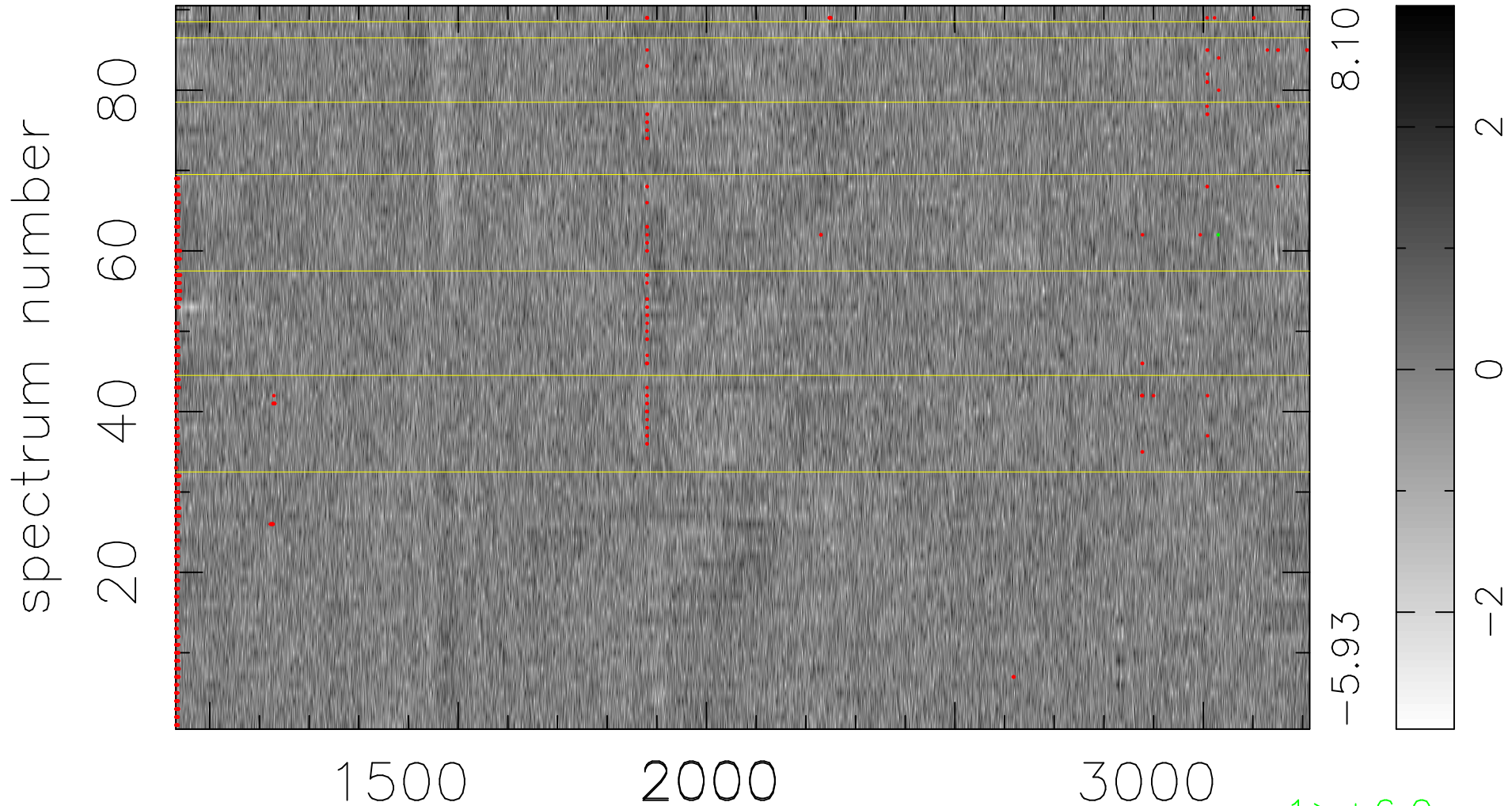


$$\chi(\lambda, t) = (\text{Data} - \text{Model } \text{AC}_5\text{B}_6\text{F}) / \sigma \chi$$

$$\chi^2 / (410940 - 5366) = 0.881 \Rightarrow 1.008$$

4566 × 90



bad:894=0.22%

λ (Å) $z = 1.95446$