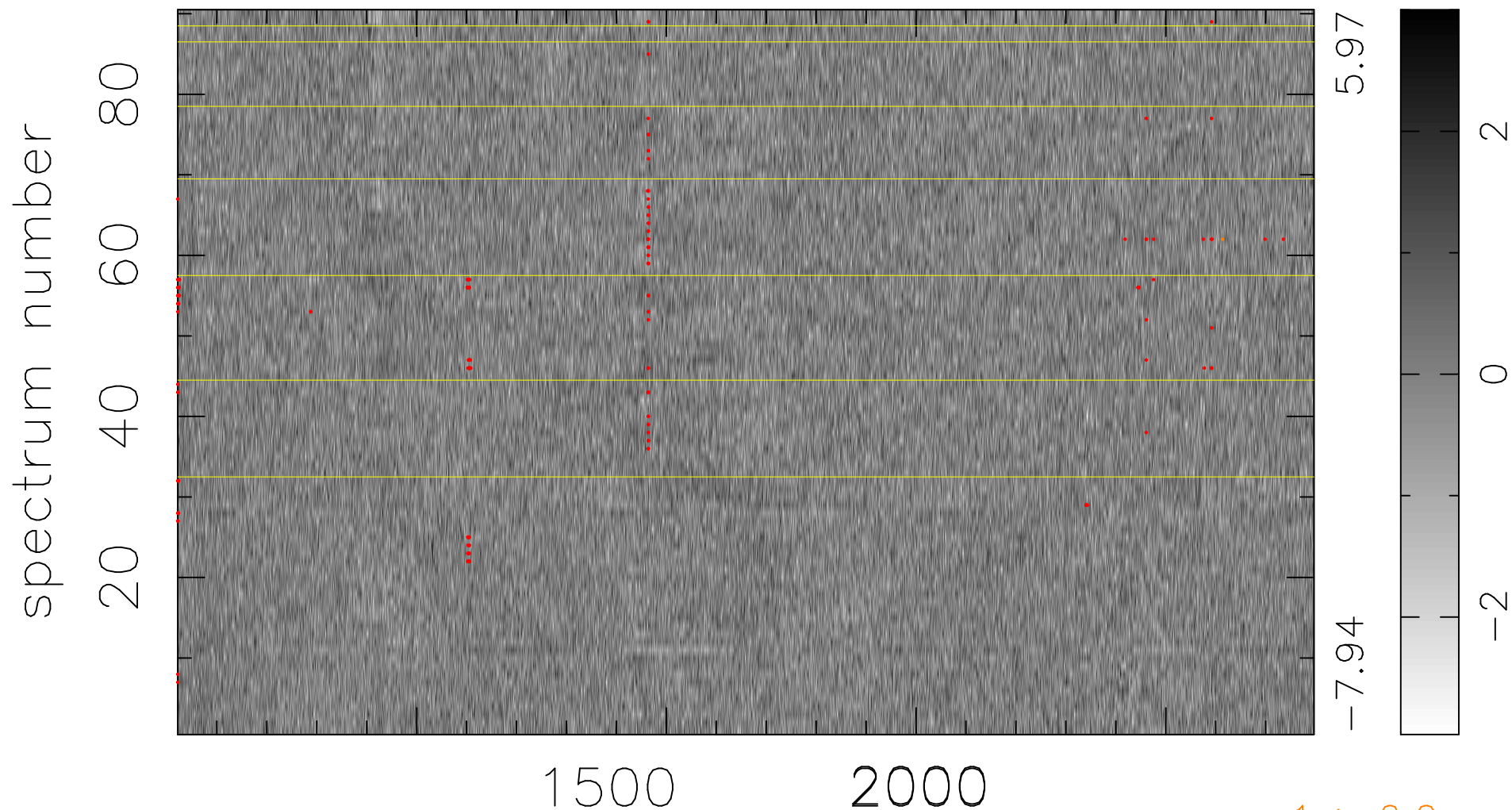


$$\chi(\lambda, t) = (\text{Data} - \text{Model AC}_5\text{F}) / \sigma \chi$$

$$\chi^2 / (409590 - 5307) = 0.940 \Rightarrow 1.008$$

4551 × 90



5.97

-7.94

2

0

-2

1 < -6.0σ

bad:200=0.049% λ (Å) z = 2.57896