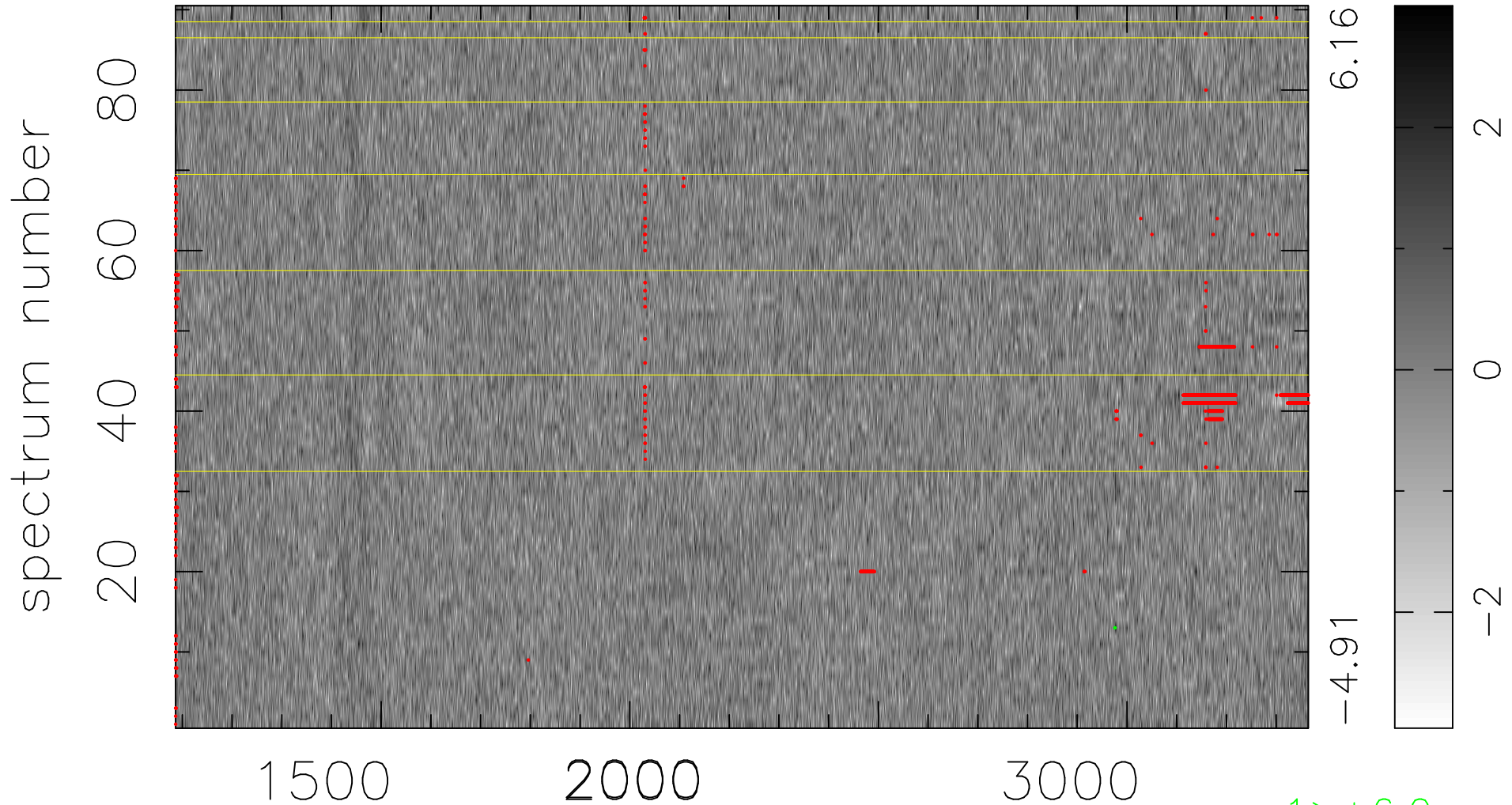


$$\chi(\lambda, t) = (\text{Data} - \text{Model } \text{AC}_5\text{B}_5\text{F}) / \sigma \chi$$

$$\chi^2 / (410130 - 5220) = 0.885 \Rightarrow 1.008$$

4557x90



bad:1235=0.30% λ (Å) $z = 1.75673$