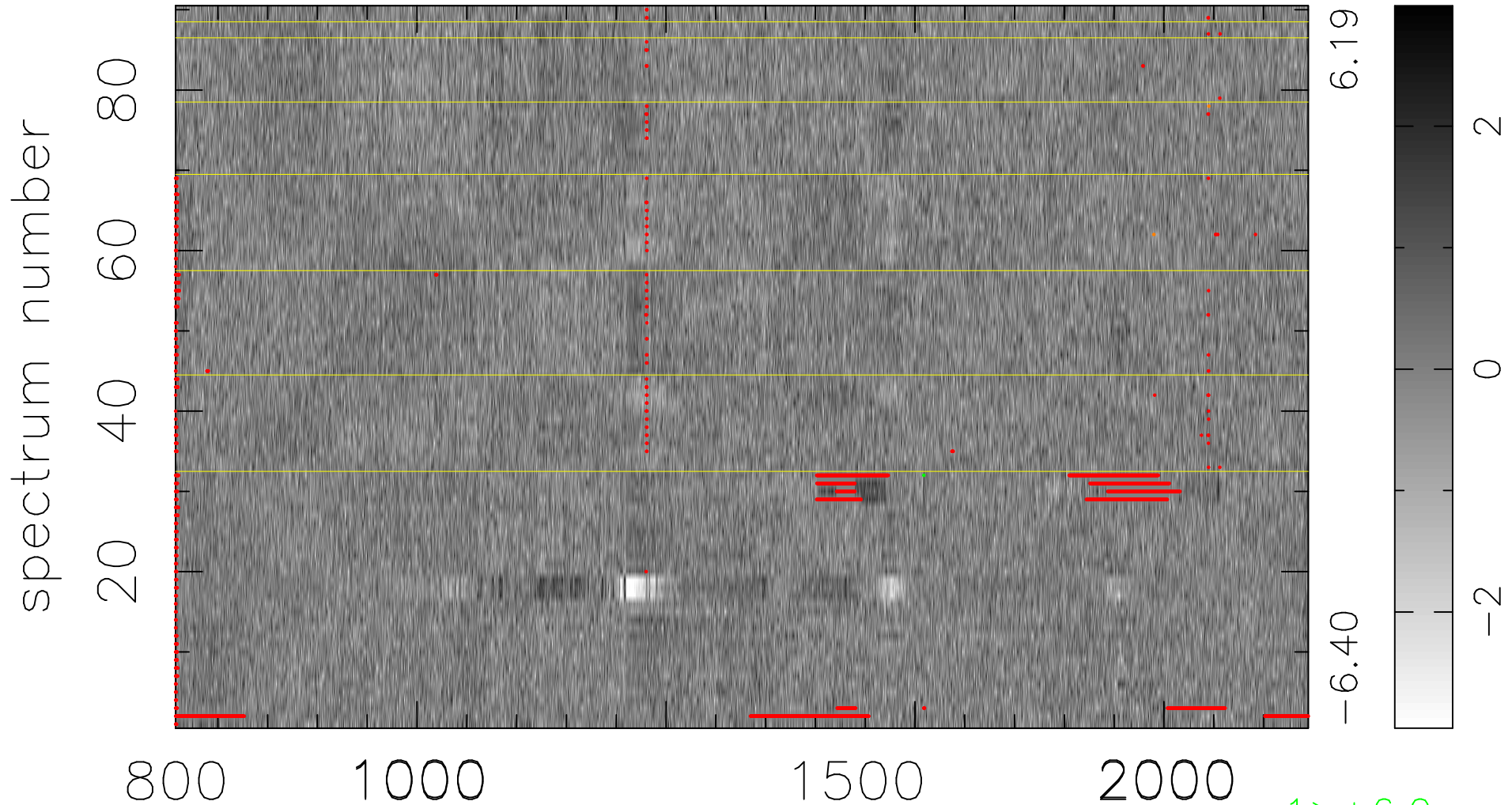


$$\chi(\lambda, t) = (\text{Data} - \text{Model AC}_5\text{F}) / \sigma \chi$$

$$\chi^2 / (409500 - 5218) = 0.956 \Rightarrow 1.009$$

4550x90



bad:3760=0.92% λ (Å) $z = 3.51080$

1 > +6.0σ
2 < -6.0σ