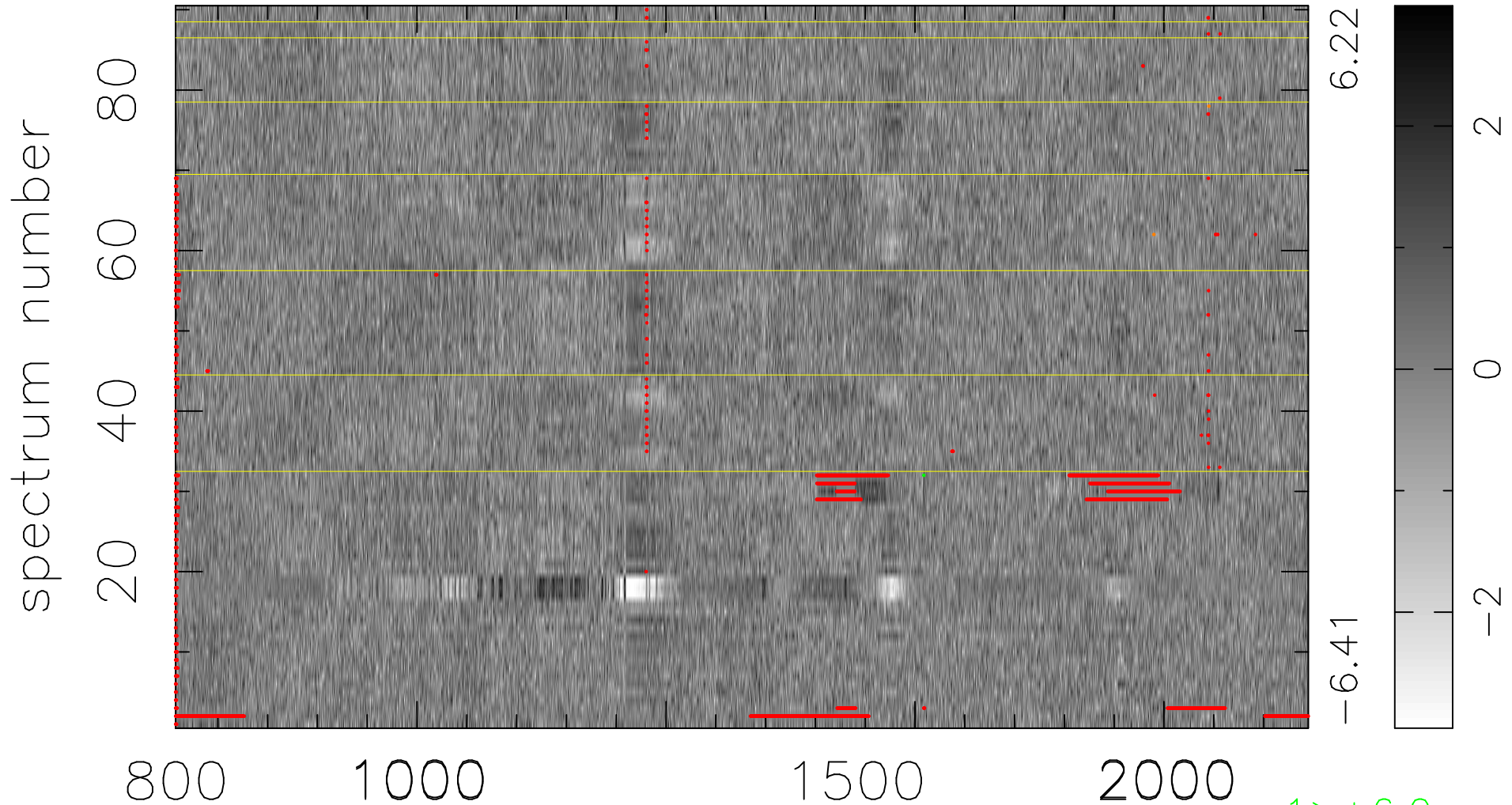


$$\chi(\lambda,t) = (\text{Data} - \text{Model } AC_5) / \sigma \chi$$

$$\chi^2 / (409500 - 5128) = 1.056 \Rightarrow 1.008$$

4550x90



bad:3760=0.92% λ (Å) $z = 3.51080$

1 > +6.0σ
2 < -6.0σ