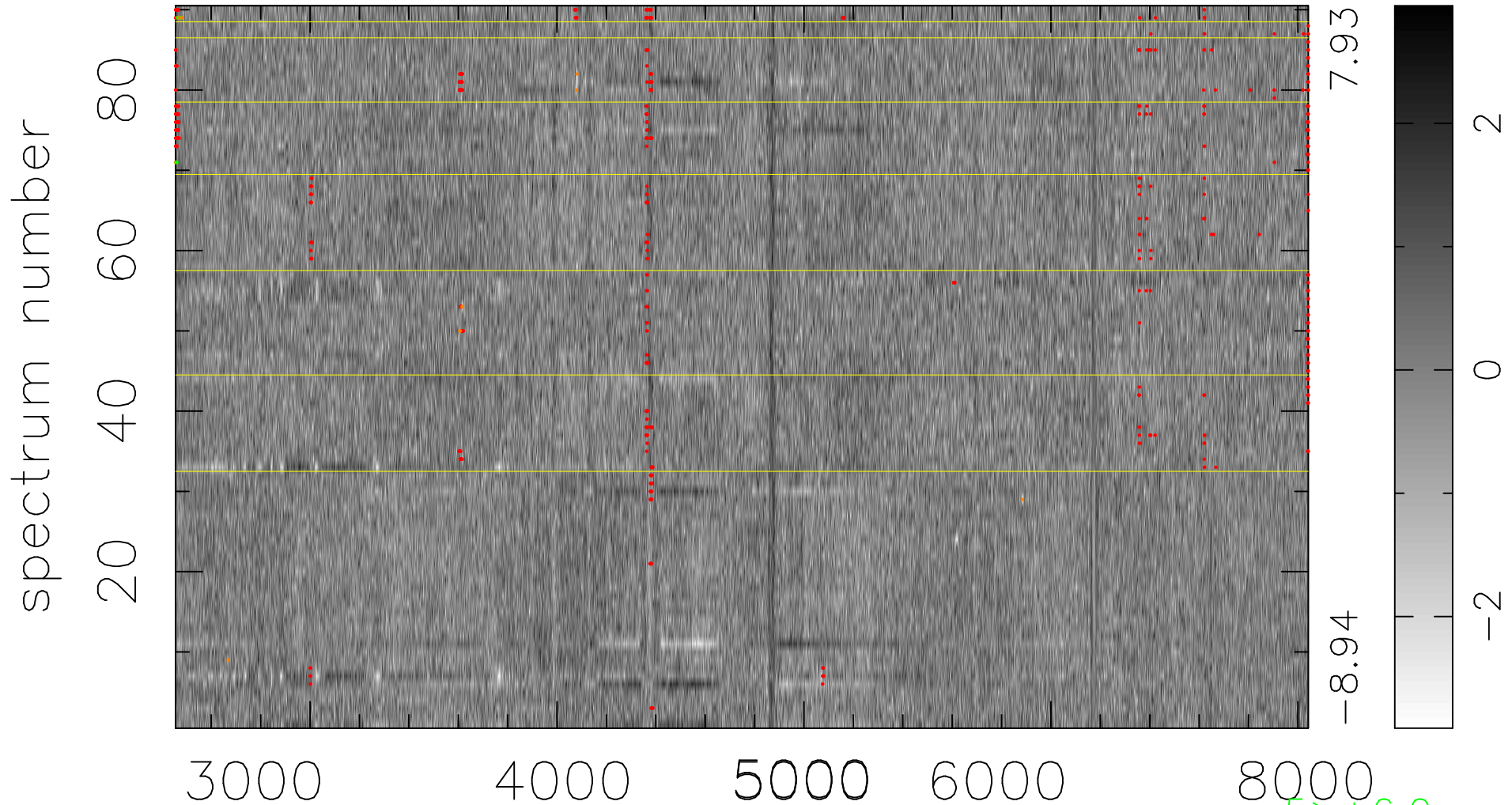


$$\chi(\lambda, t) = (\text{Data} - \text{Model } \text{AC}_5\text{B}_4\text{F}) / \sigma \chi$$

$$\chi^2 / (412830 - 5271) = 0.971 \Rightarrow 0.990$$

4587 × 90



bad:637=0.15%

λ (Å) $z = 0.28863$

5 > +6.0σ
15 < -6.0σ