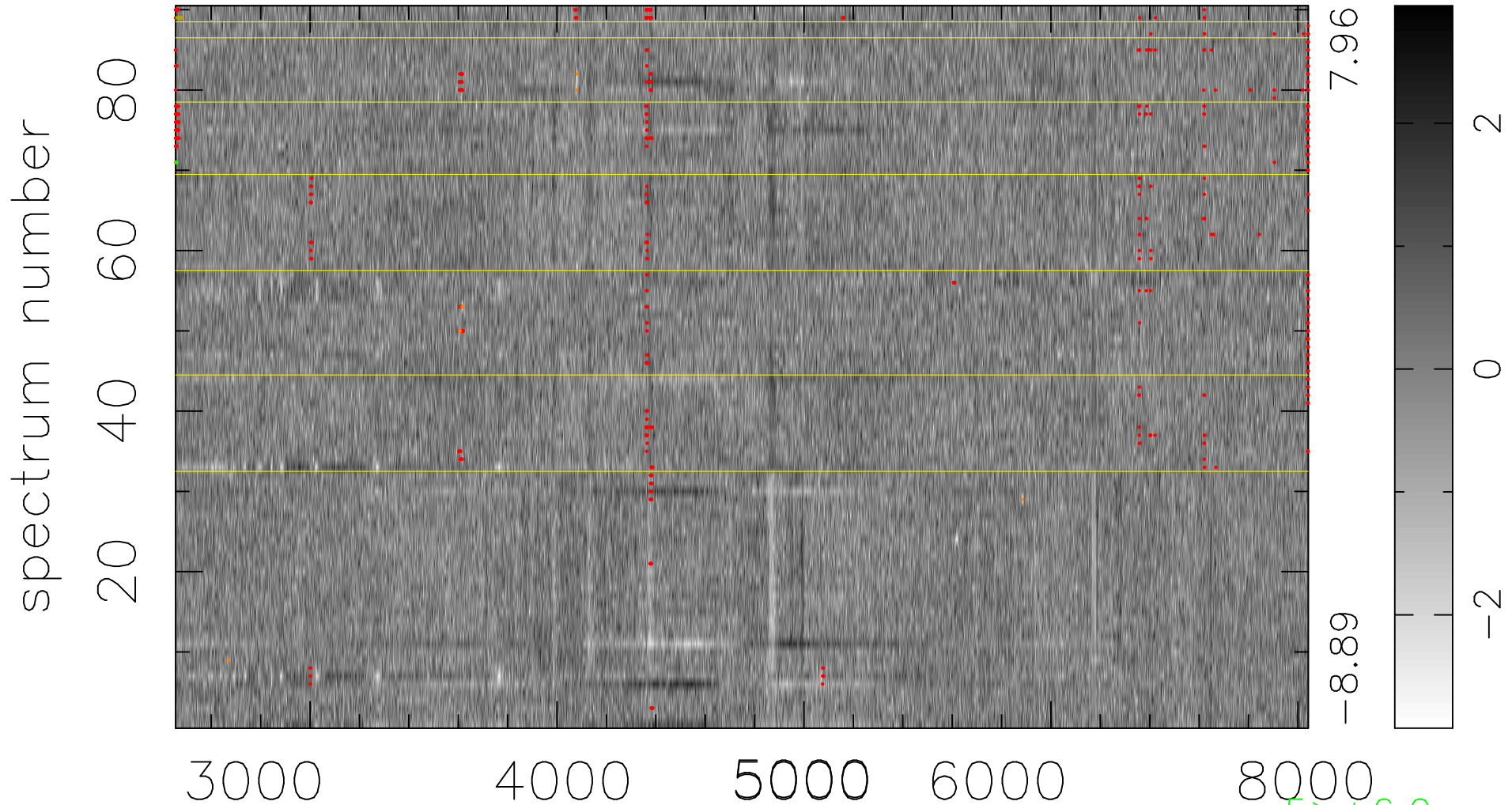


$$\chi(\lambda, t) = (\text{Data} - \text{Model AC}_5\text{F}) / \sigma \chi$$

$$\chi^2 / (412830 - 5076) = 0.980 \Rightarrow 0.992$$

4587 × 90



bad:637=0.15%

λ (Å) $z = 0.28863$

5 > +6.0σ
15 < -6.0σ