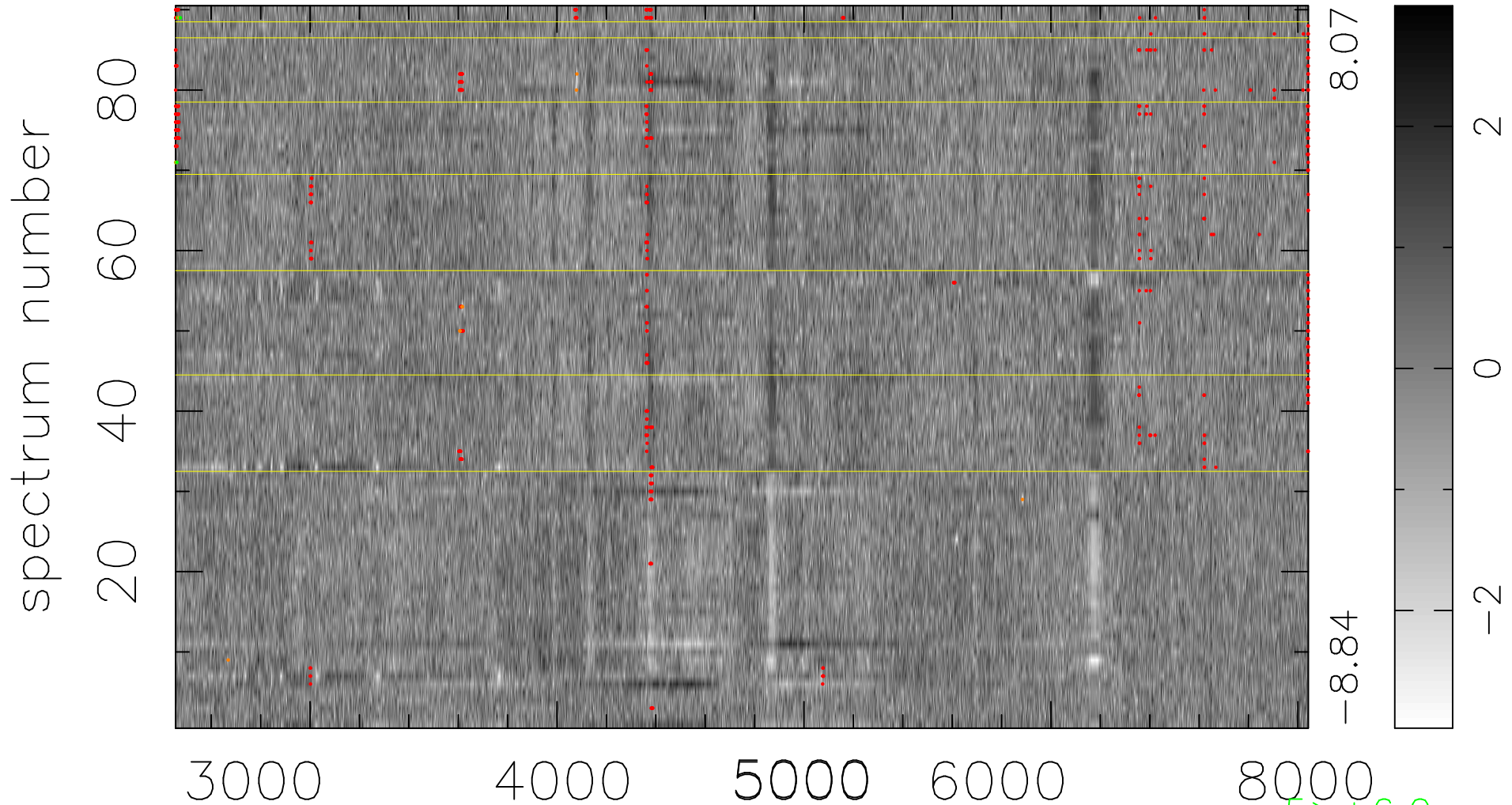


$$\chi(\lambda, t) = (\text{Data} - \text{Model } AC_5) / \sigma \chi$$

$$\chi^2 / (412830 - 4986) = 1.123 \Rightarrow 1.008$$

4587 × 90



bad:637=0.15%

λ (Å) $z = 0.28863$

5 > +6.0σ
13 < -6.0σ