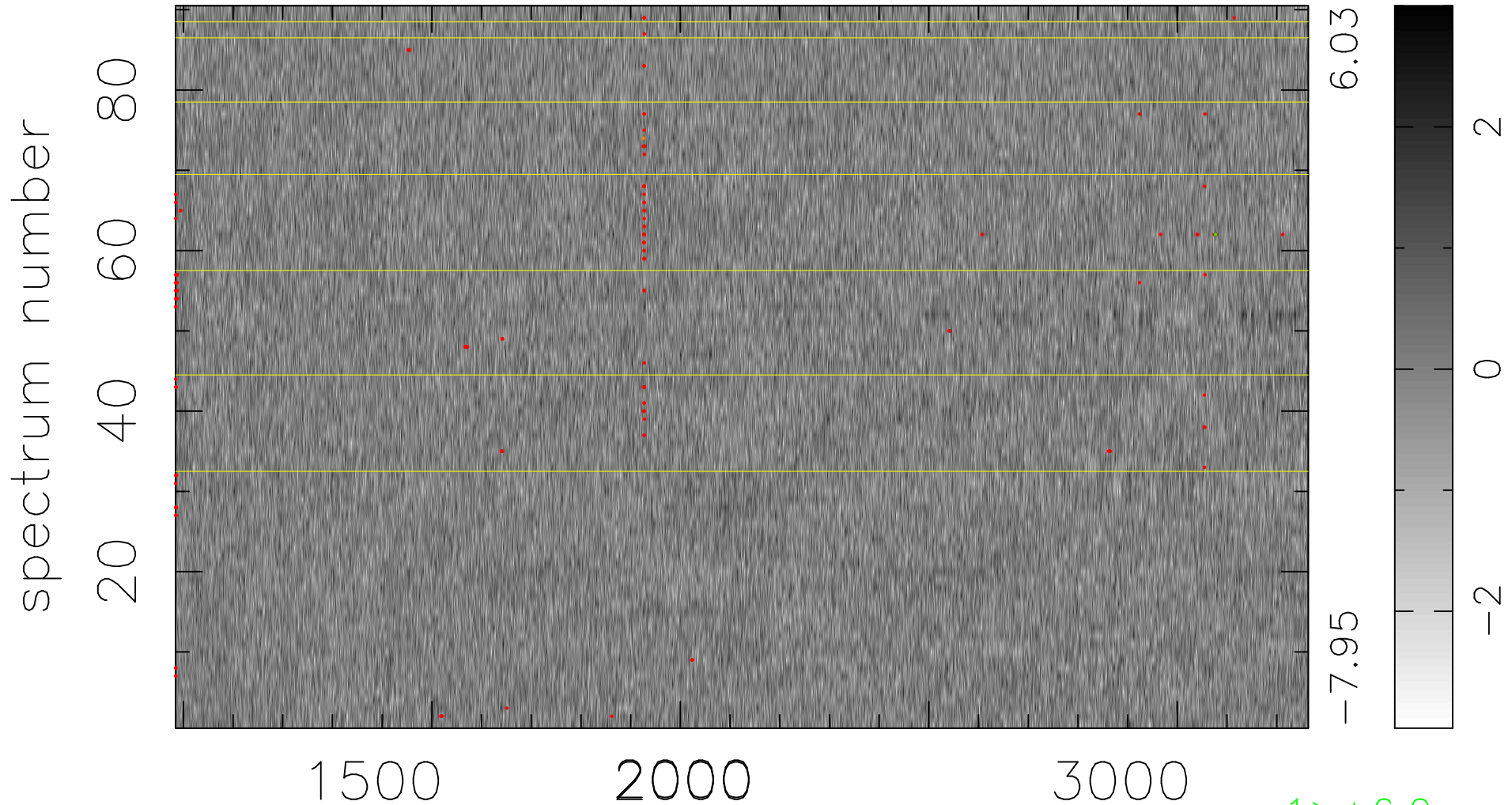


$$\chi(\lambda, t) = (\text{Data} - \text{Model } \text{AC}_5\text{B}_5\text{F}) / \sigma \chi$$

$$\chi^2 / (410310 - 5321) = 0.936 \Rightarrow 1.007$$

4559x90



bad:174=0.042% λ (Å) $z = 1.89145$

1 > +6.0 σ

1 < -6.0 σ