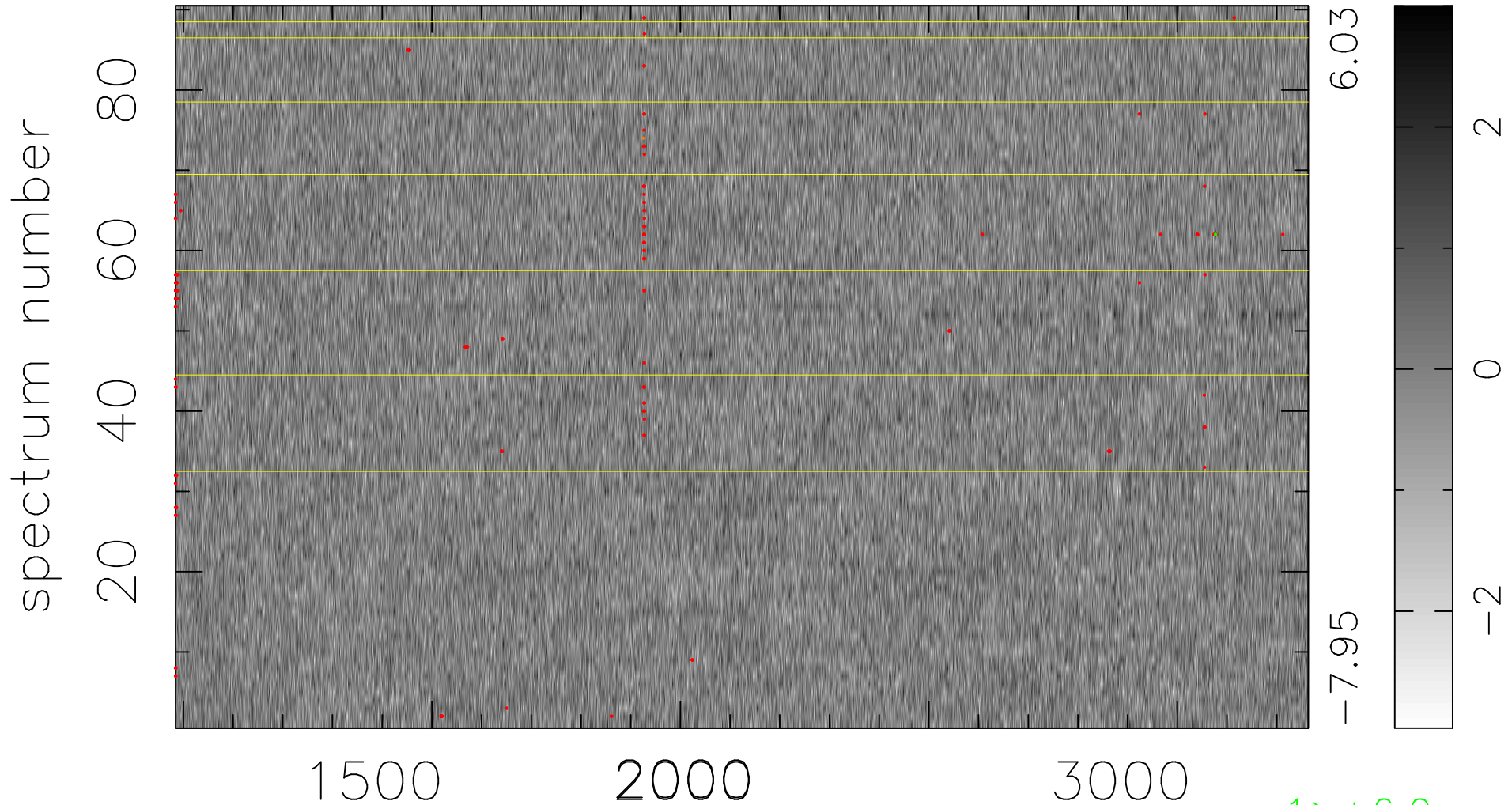


$$\chi(\lambda, t) = ( \text{Data} - \text{Model AC}_5\text{F} ) / \sigma \chi$$

$$\chi^2 / (410310 - 5133) = 0.937 \Rightarrow 1.007$$

4559x90



bad:174=0.042%  $\lambda$  (Å)  $z = 1.89145$

1 > +6.0 $\sigma$

1 < -6.0 $\sigma$