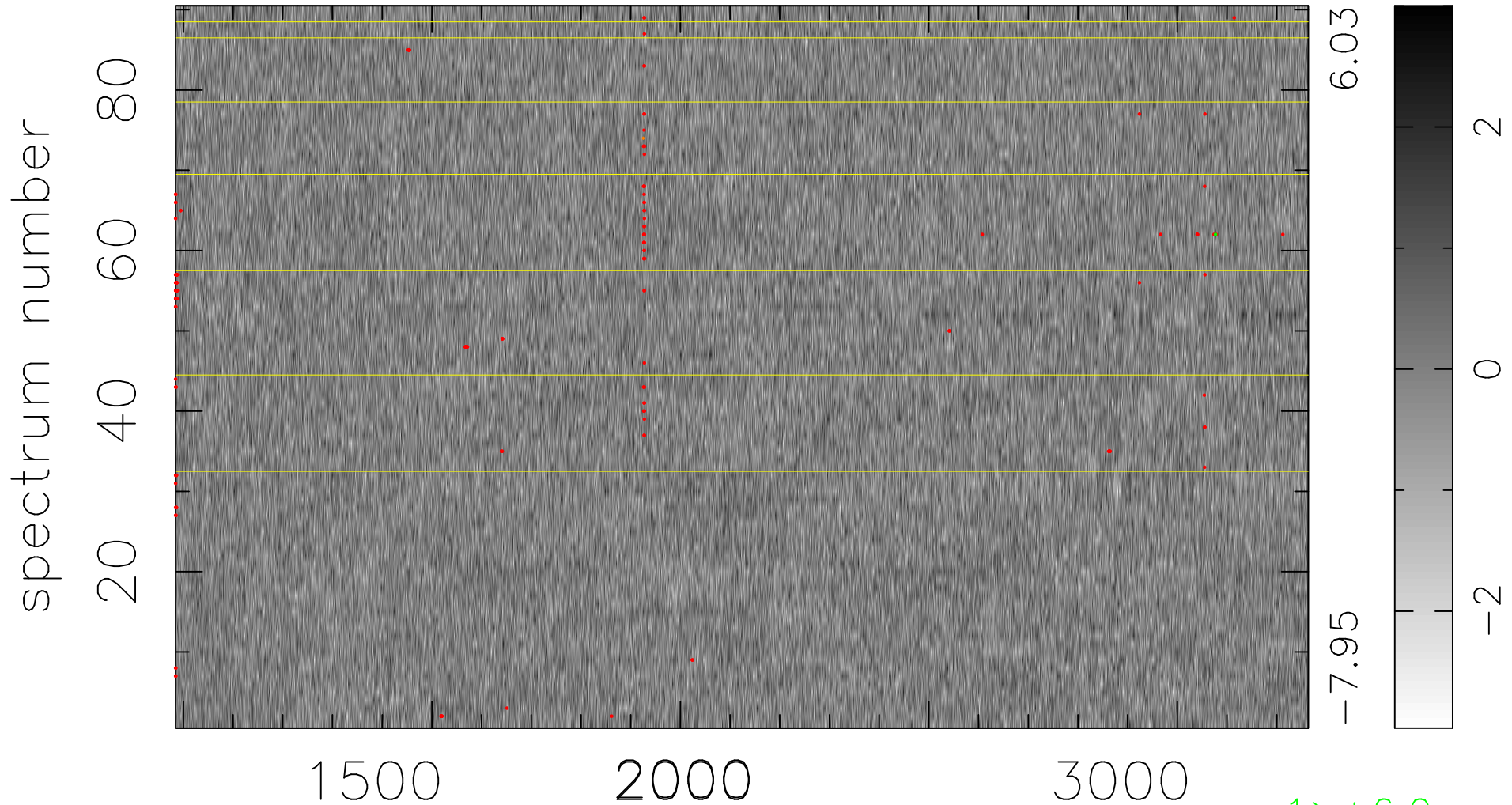


$$\chi(\lambda,t) = (\text{Data} - \text{Model } AC_5) / \sigma \chi$$

$$\chi^2 / (410310 - 5043) = 0.937 \Rightarrow 1.007$$

4559x90



bad:174=0.042% λ (Å) $z = 1.89145$

1 > +6.0 σ

1 < -6.0 σ